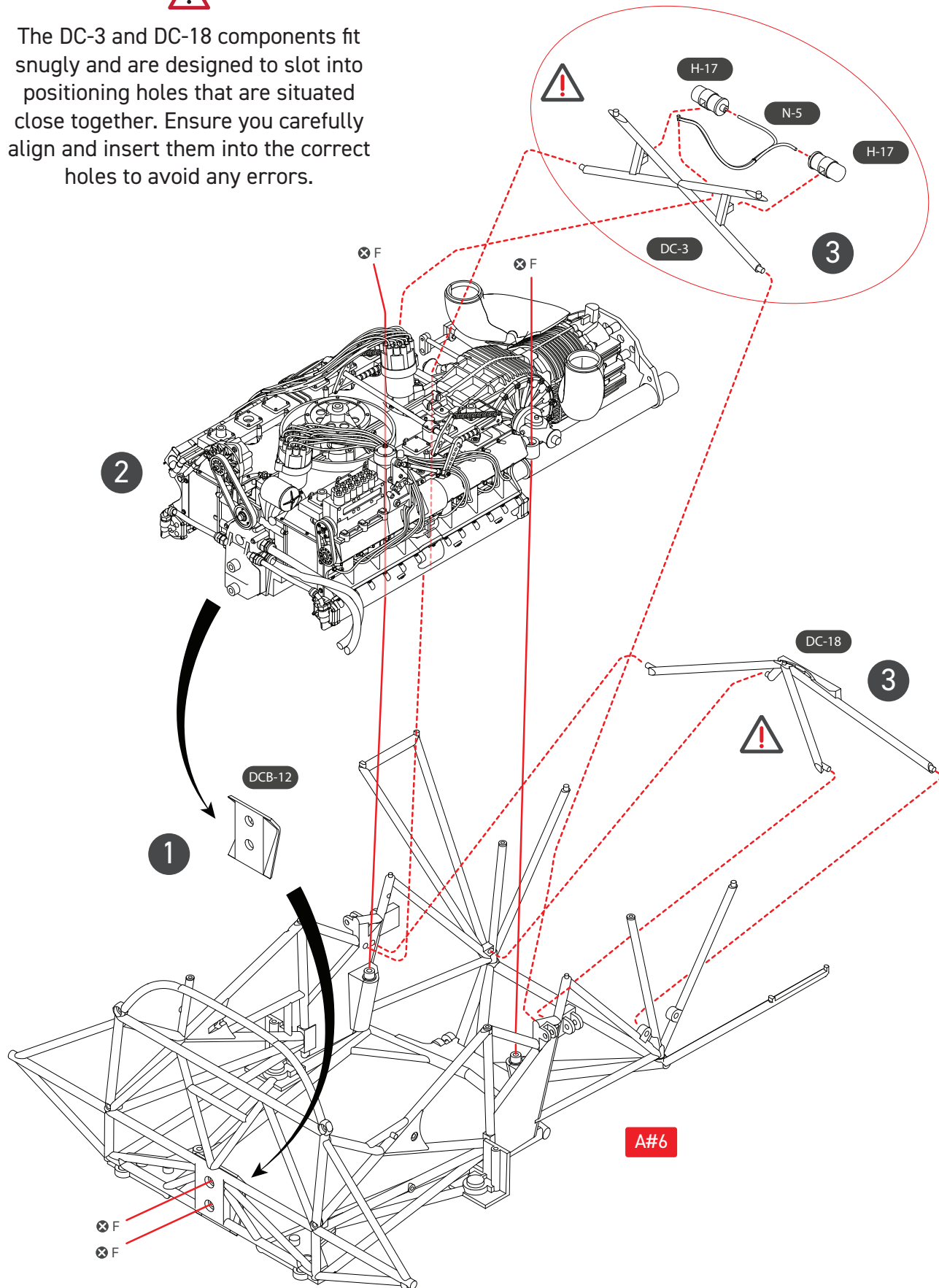
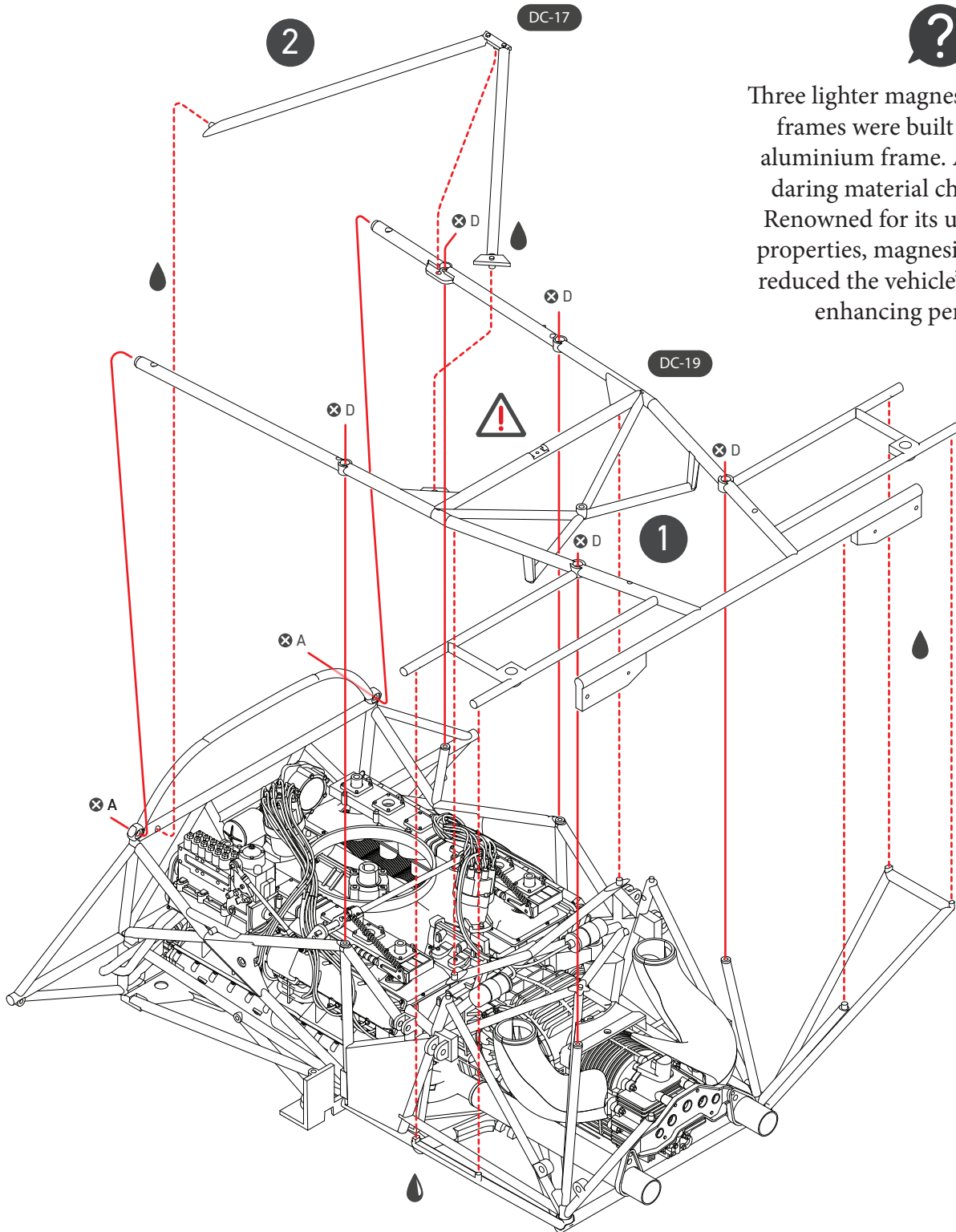




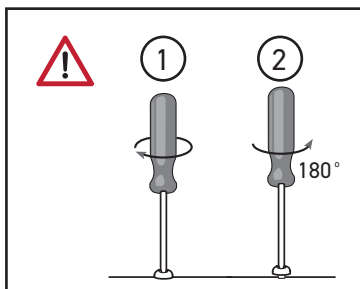
The DC-3 and DC-18 components fit snugly and are designed to slot into positioning holes that are situated close together. Ensure you carefully align and insert them into the correct holes to avoid any errors.



SCREW F = 4



Three lighter magnesium grid tubular frames were built in place of the aluminium frame. An inventive yet daring material choice for its era. Renowned for its ultra-lightweight properties, magnesium significantly reduced the vehicle's overall weight, enhancing performance.



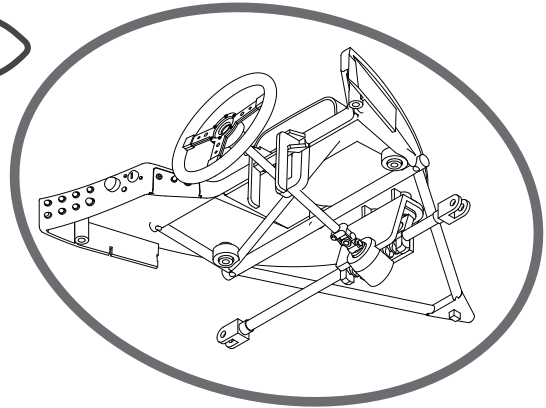
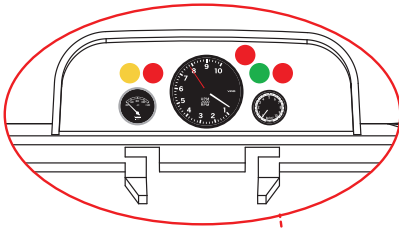
Carefully screw 360° and then unscrew 180° and repeat to remove metal swarf and reduce stress on screws.

SCREW A = 2  
SCREW D = 5

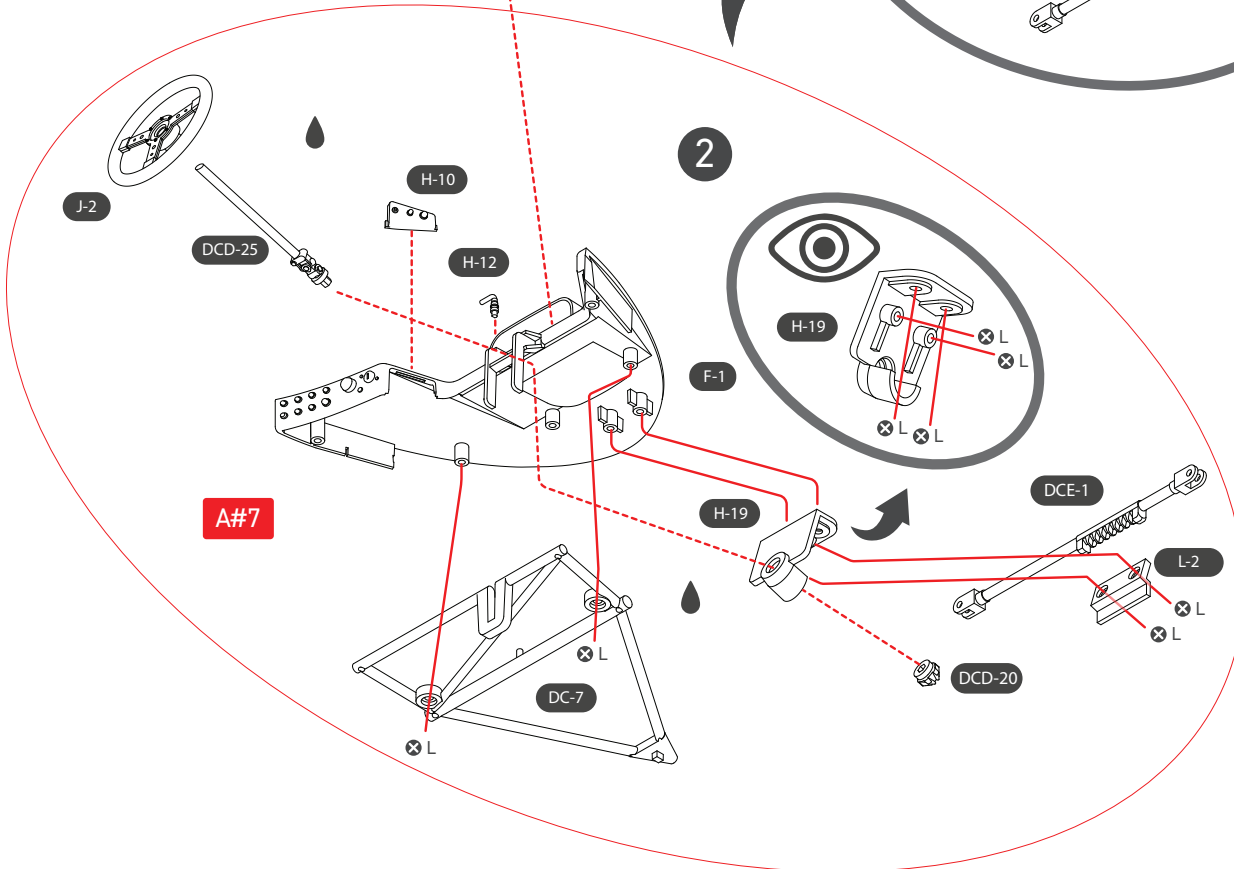
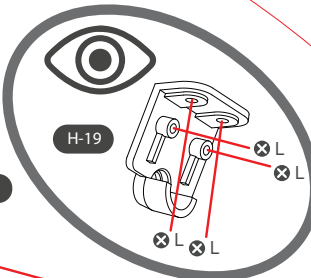
5

1

WD-3

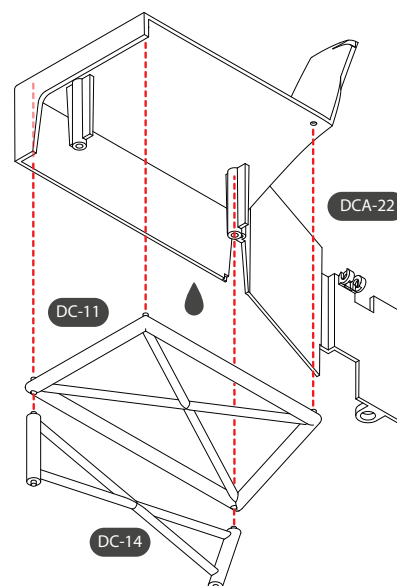
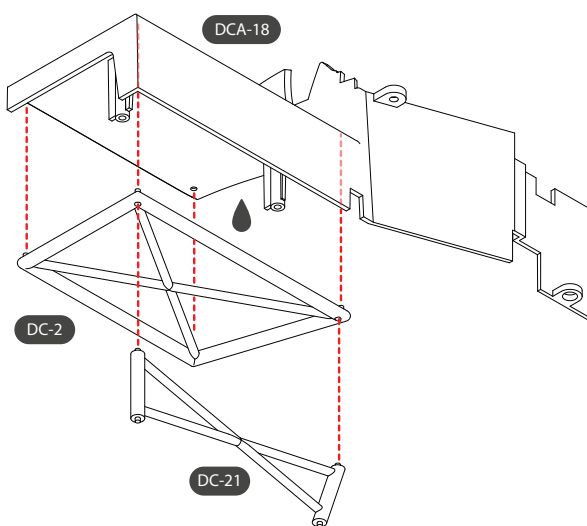


2

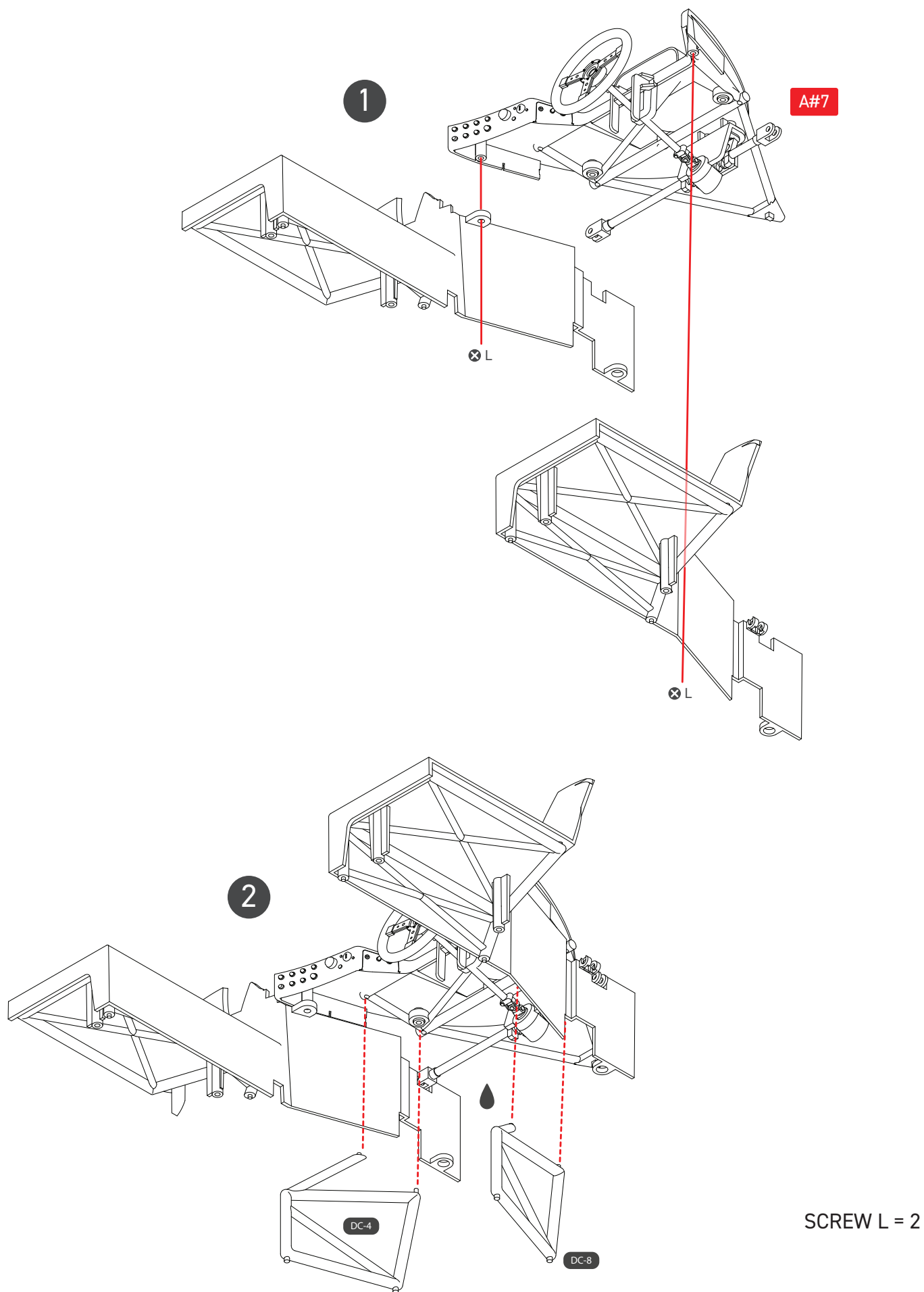


6

3

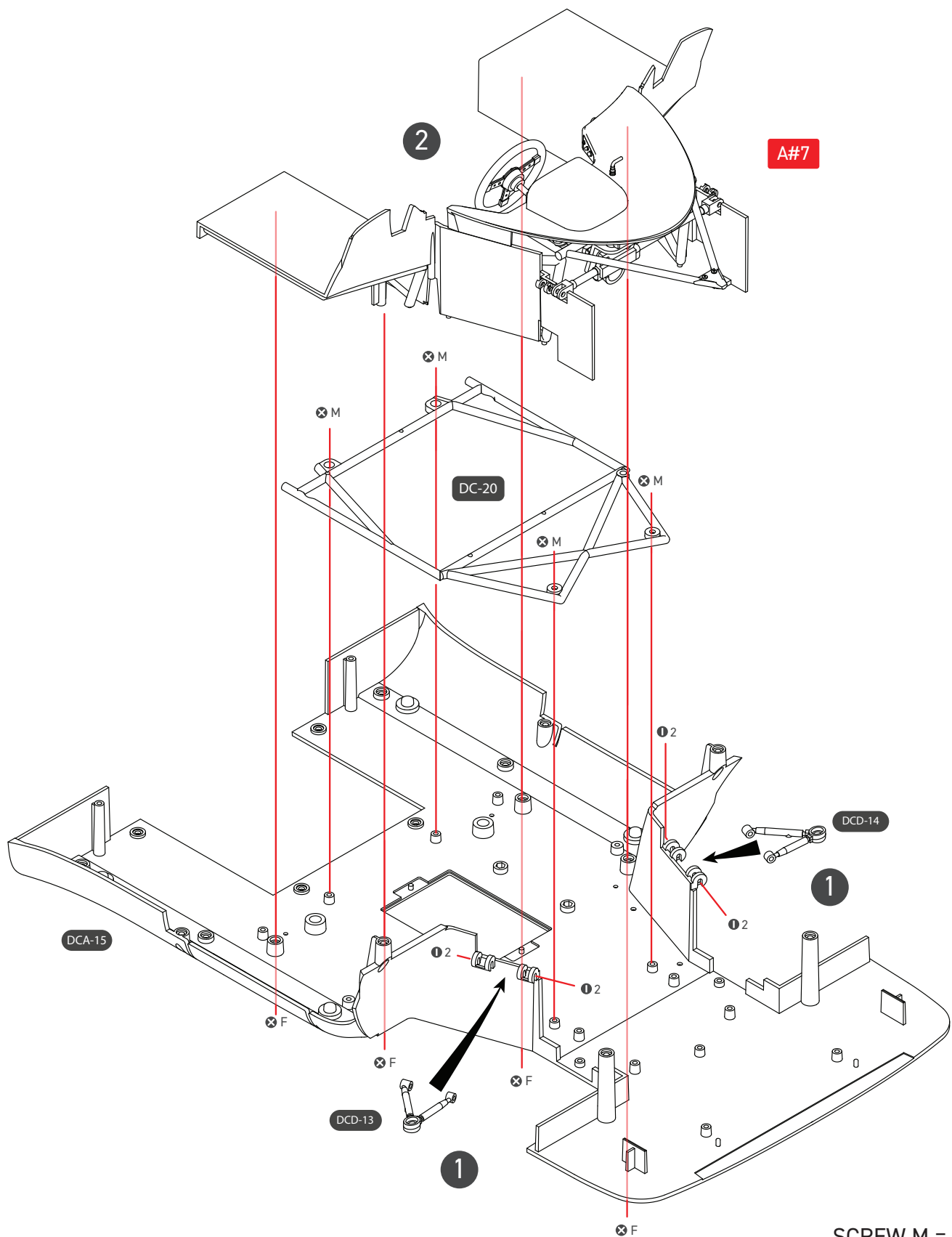


SCREW L = 6





7



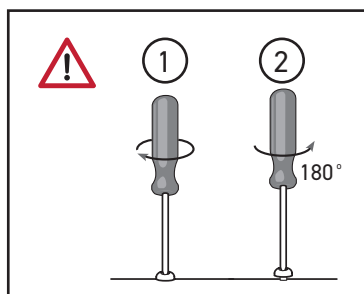
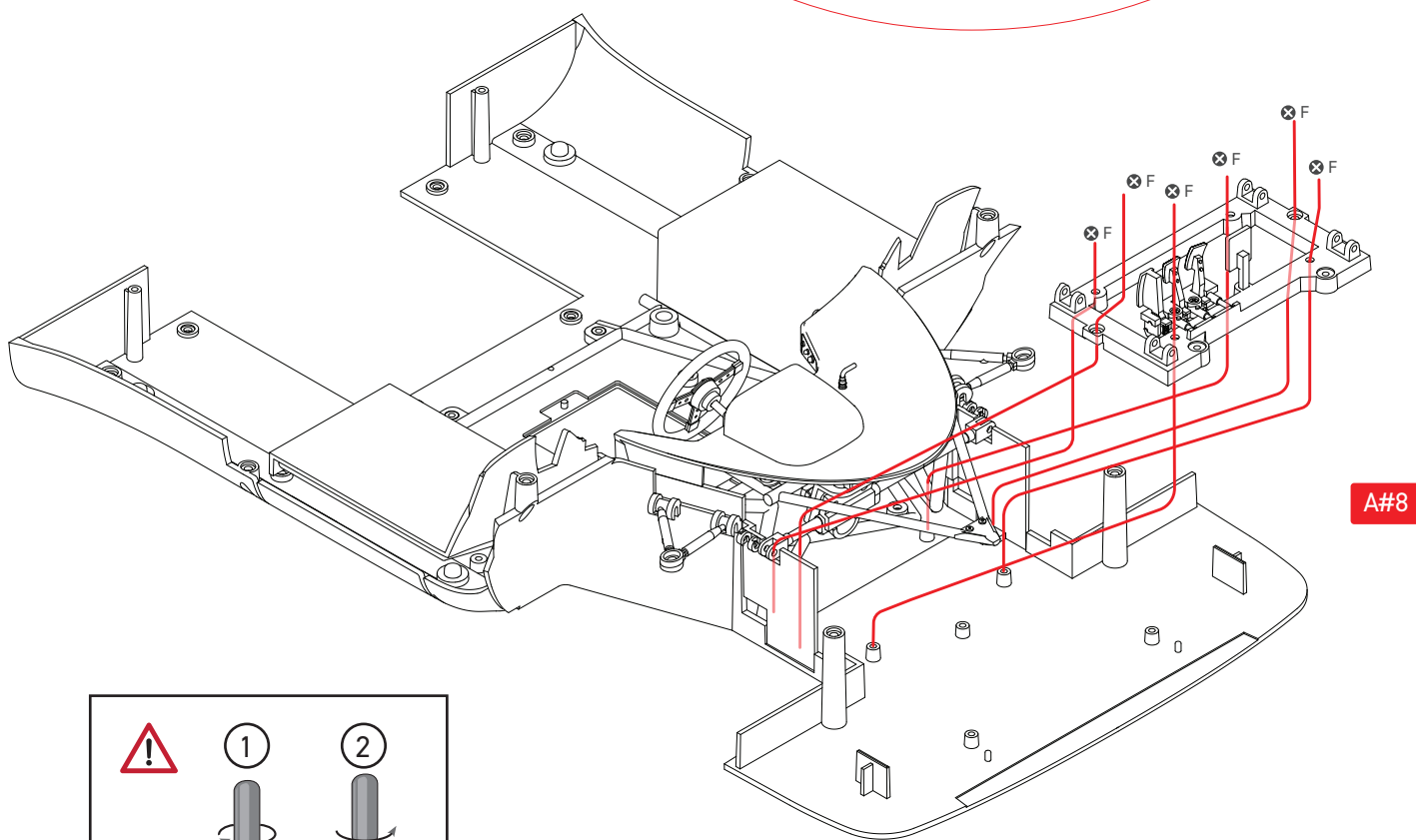
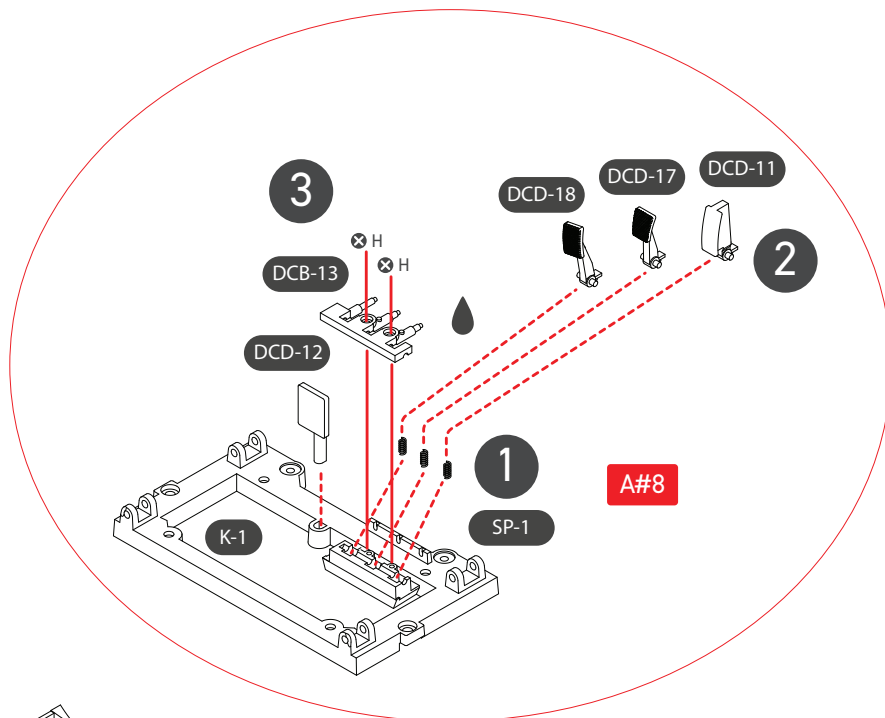
SCREW M = 4  
SCREW F = 4  
PIN 2 = 4



8



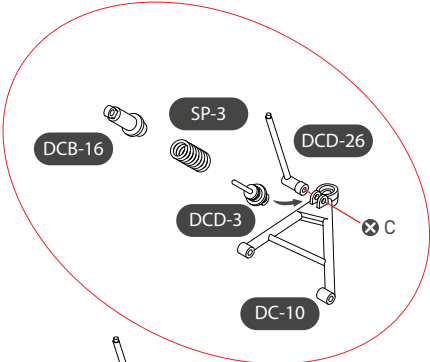
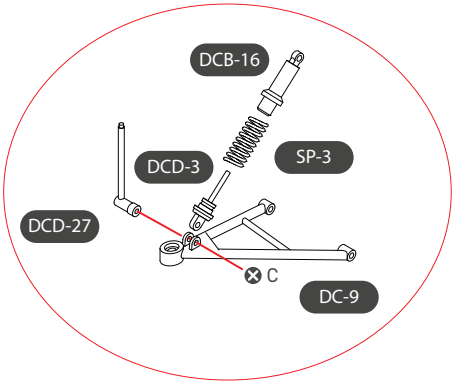
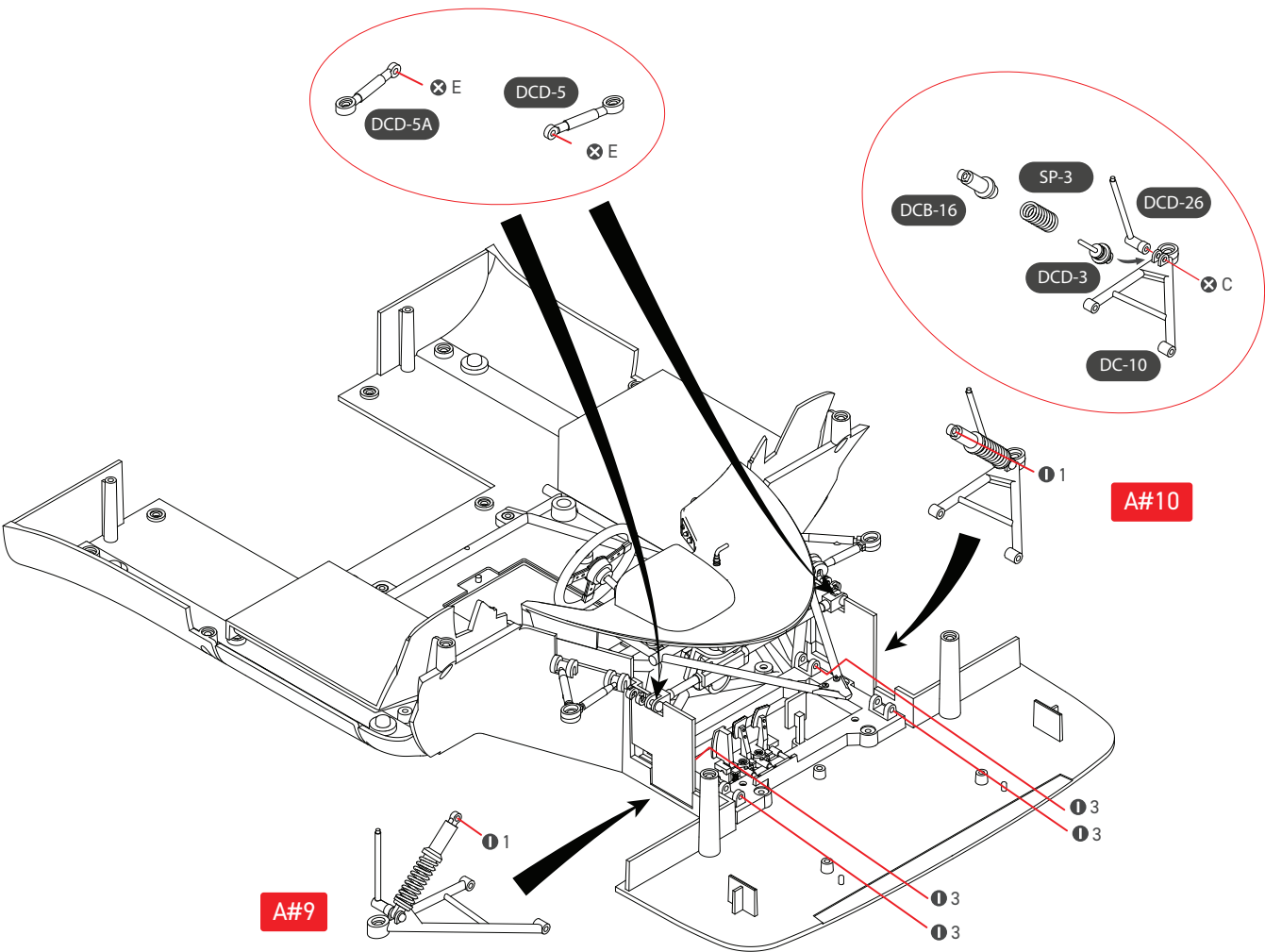
Glue SP-1 into K-1 first to stop these from moving whilst building pedal assembly



Carefully screw 360° and then unscrew 180° and repeat to remove metal swarf and reduce stress on screws

SCREW F = 6  
SCREW H = 2

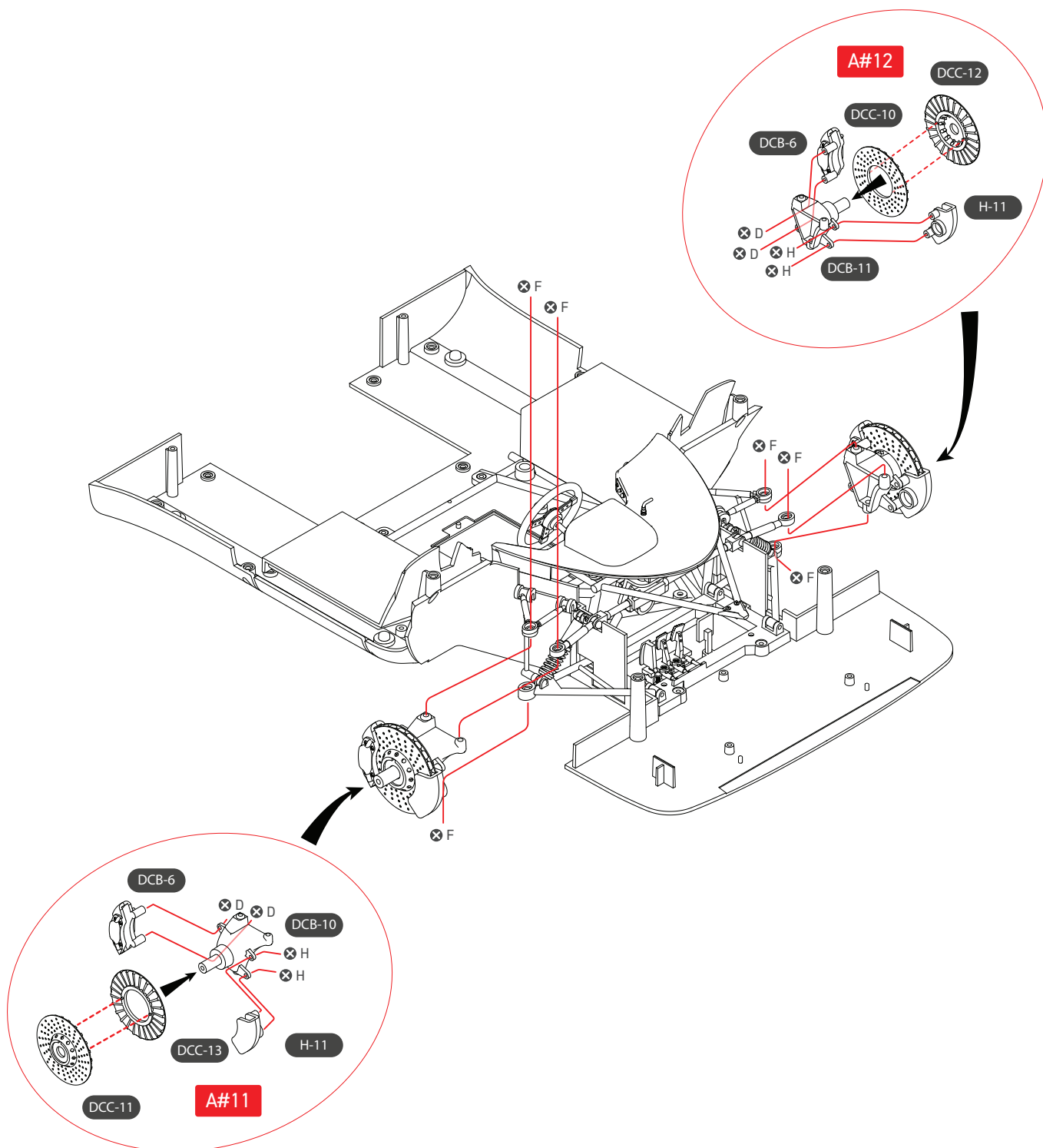
9



A#10

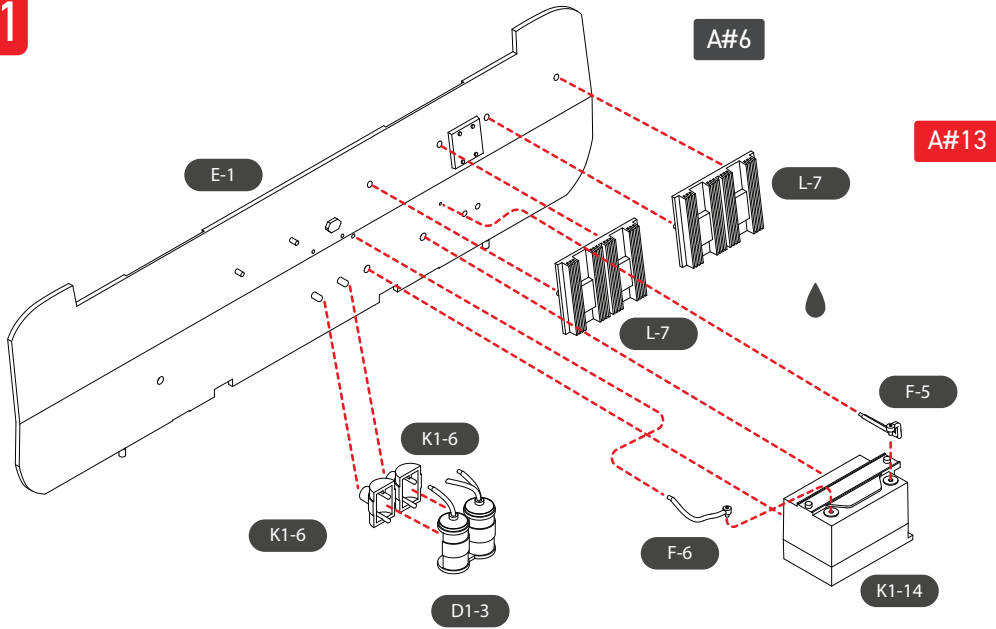
A#9

SCREW C = 2  
SCREW E = 2  
PIN 1 = 2  
PIN 3 = 4

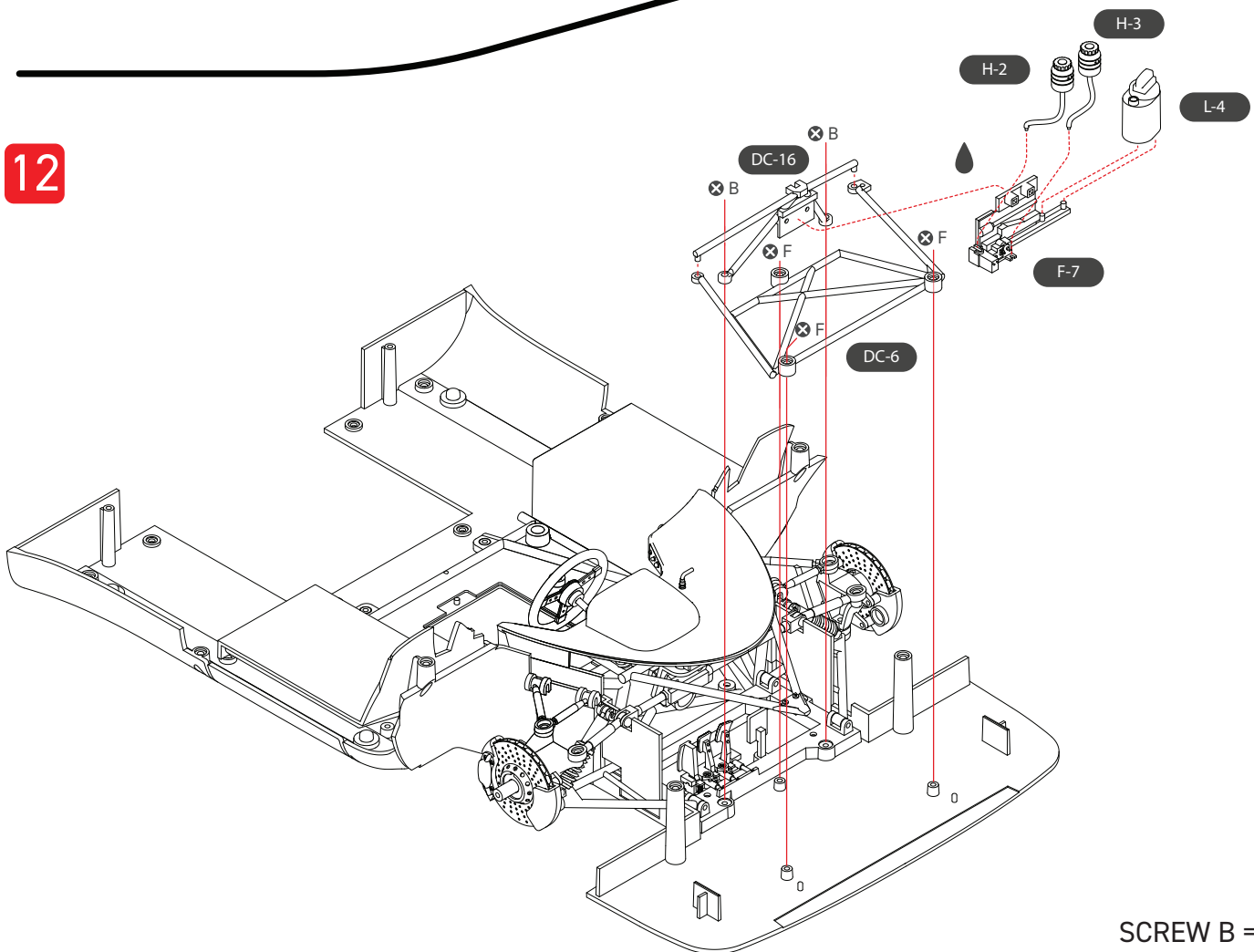


SCREW D = 4  
SCREW F = 6  
SCREW H = 4

11



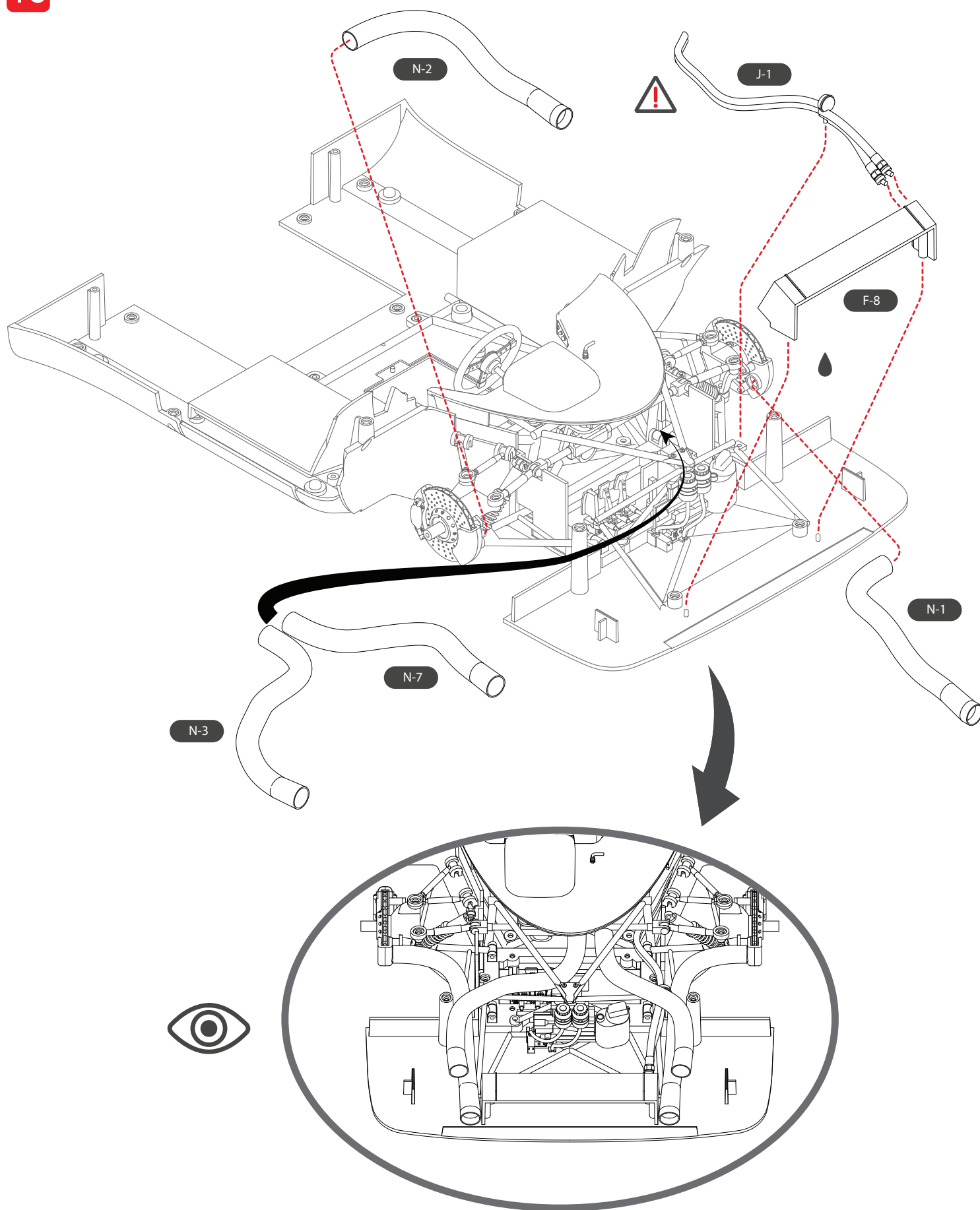
12



SCREW B = 2  
SCREW F = 3



13

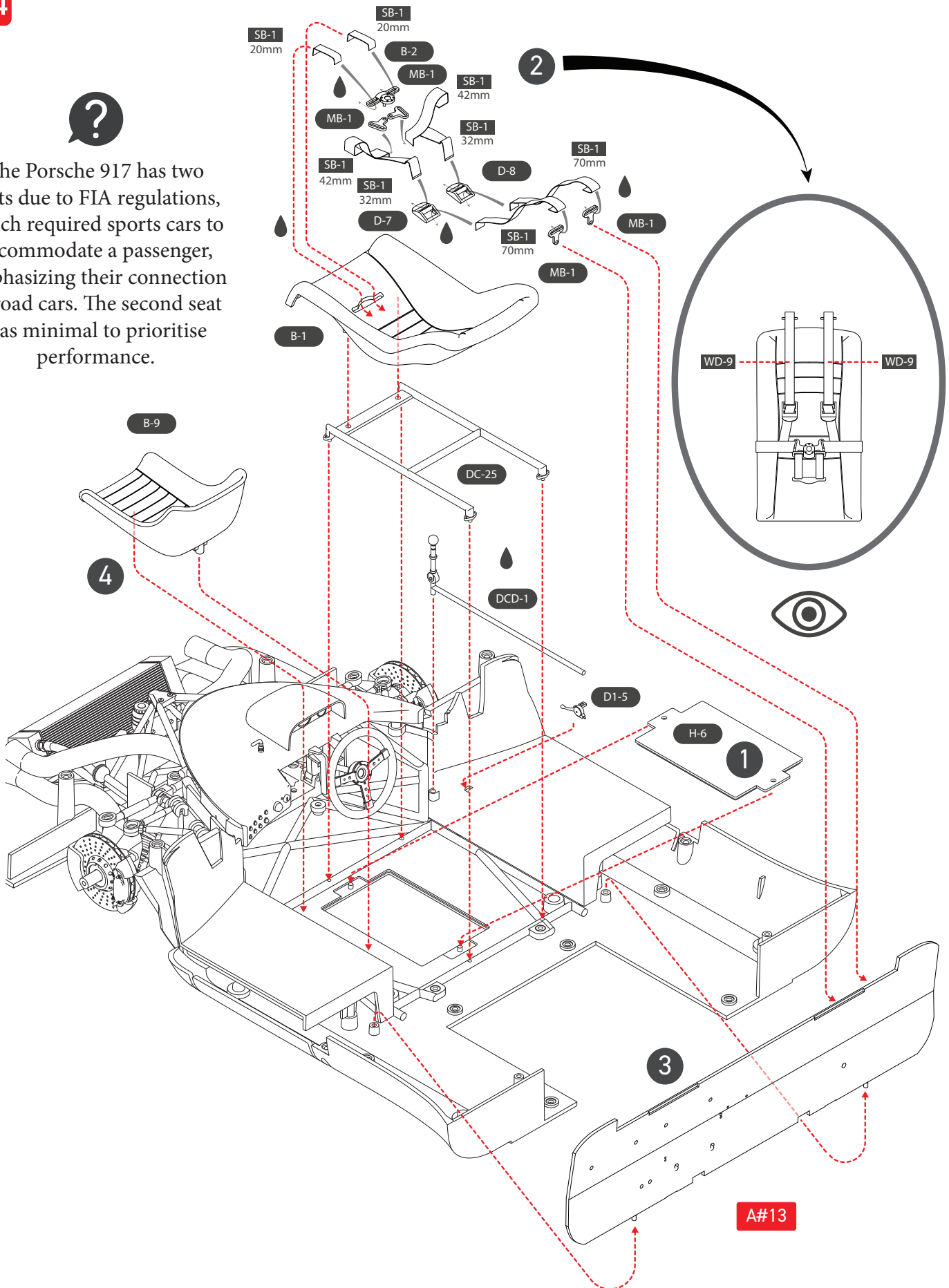




14

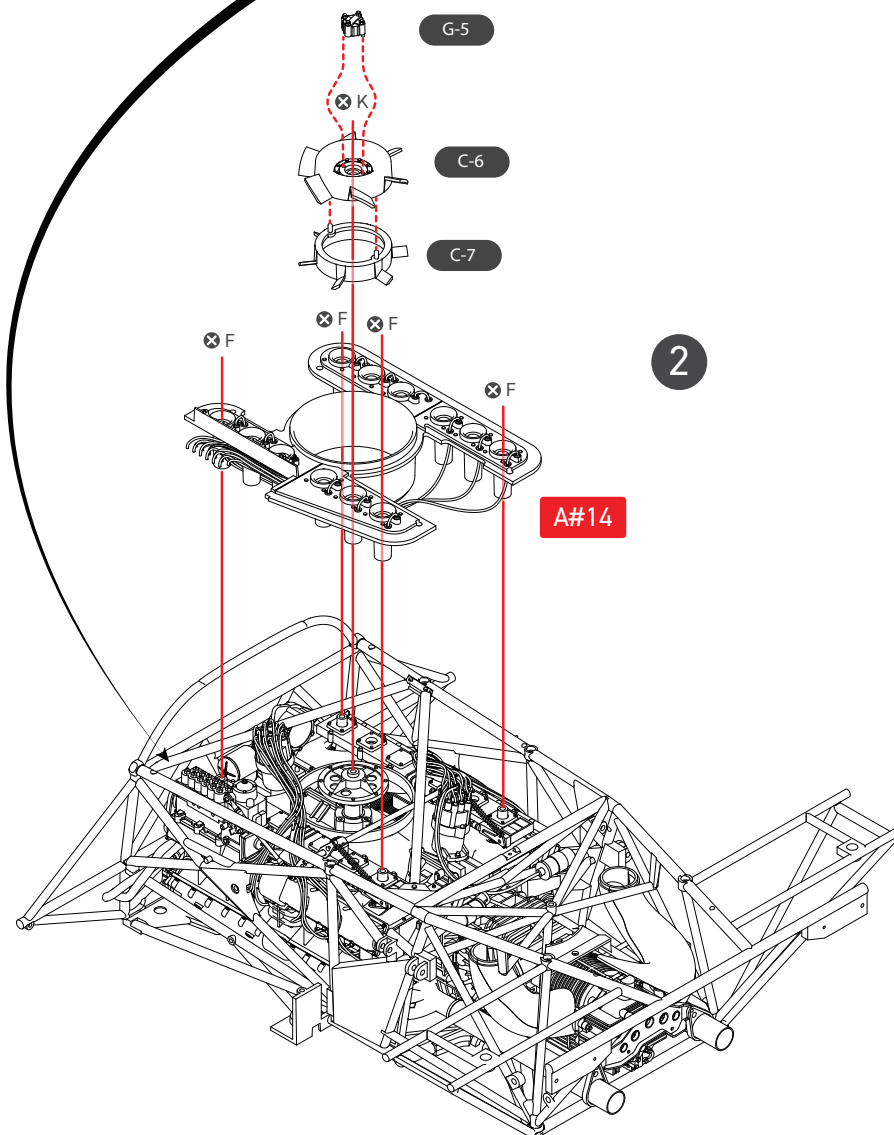
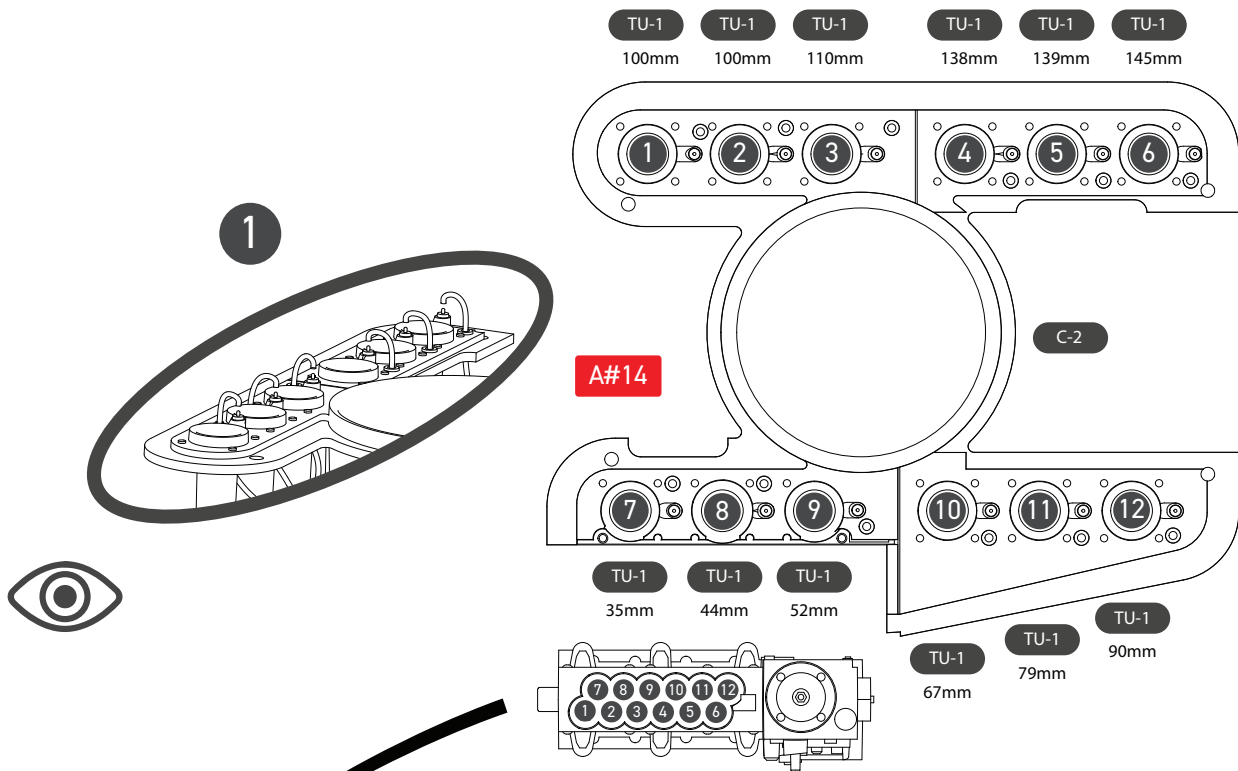


The Porsche 917 has two seats due to FIA regulations, which required sports cars to accommodate a passenger, emphasizing their connection to road cars. The second seat was minimal to prioritise performance.



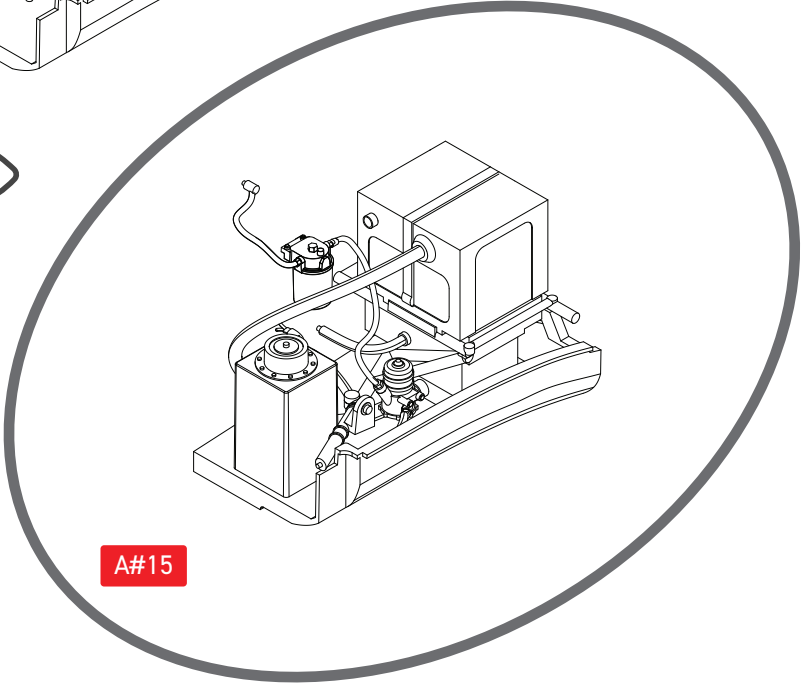
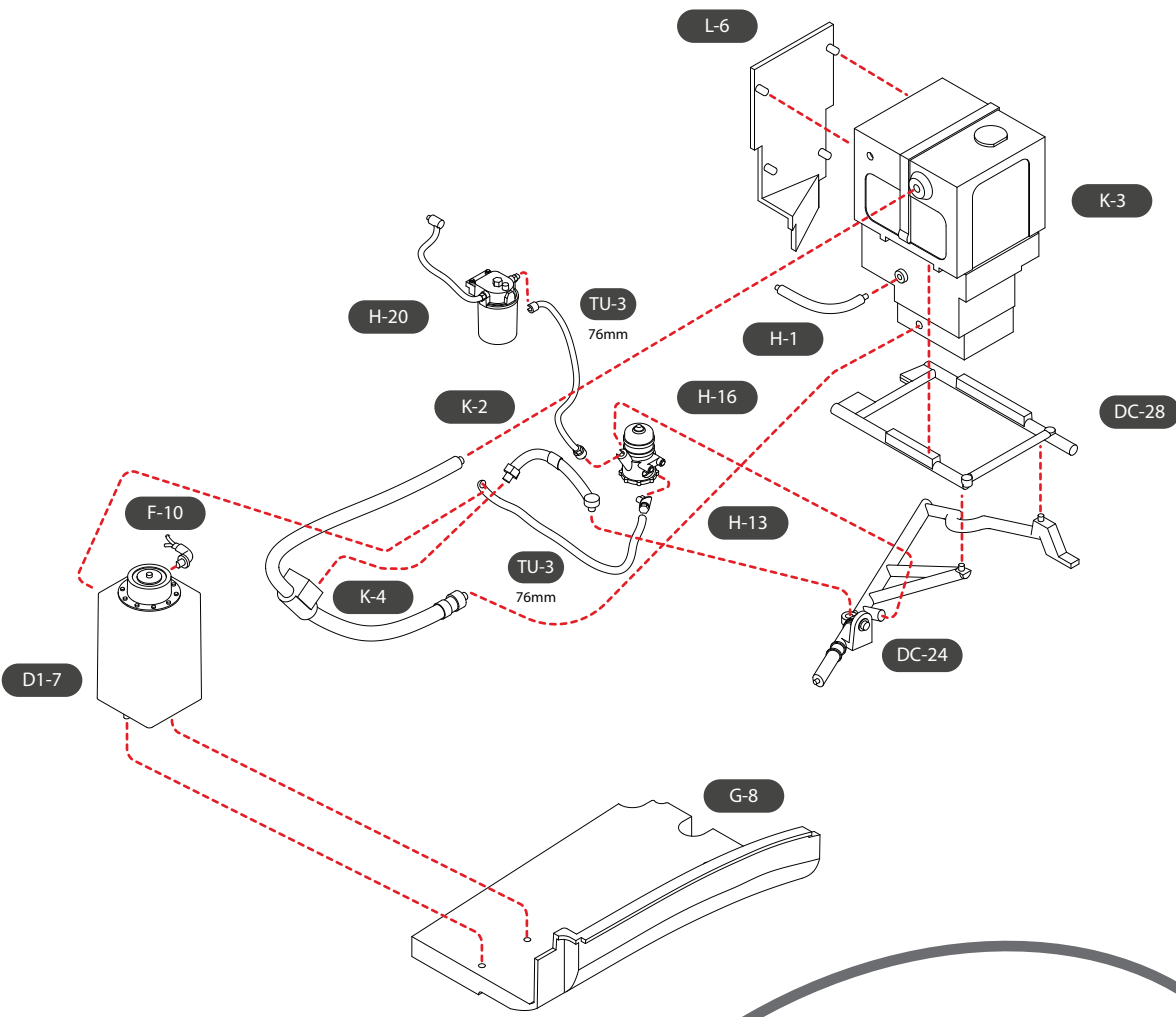


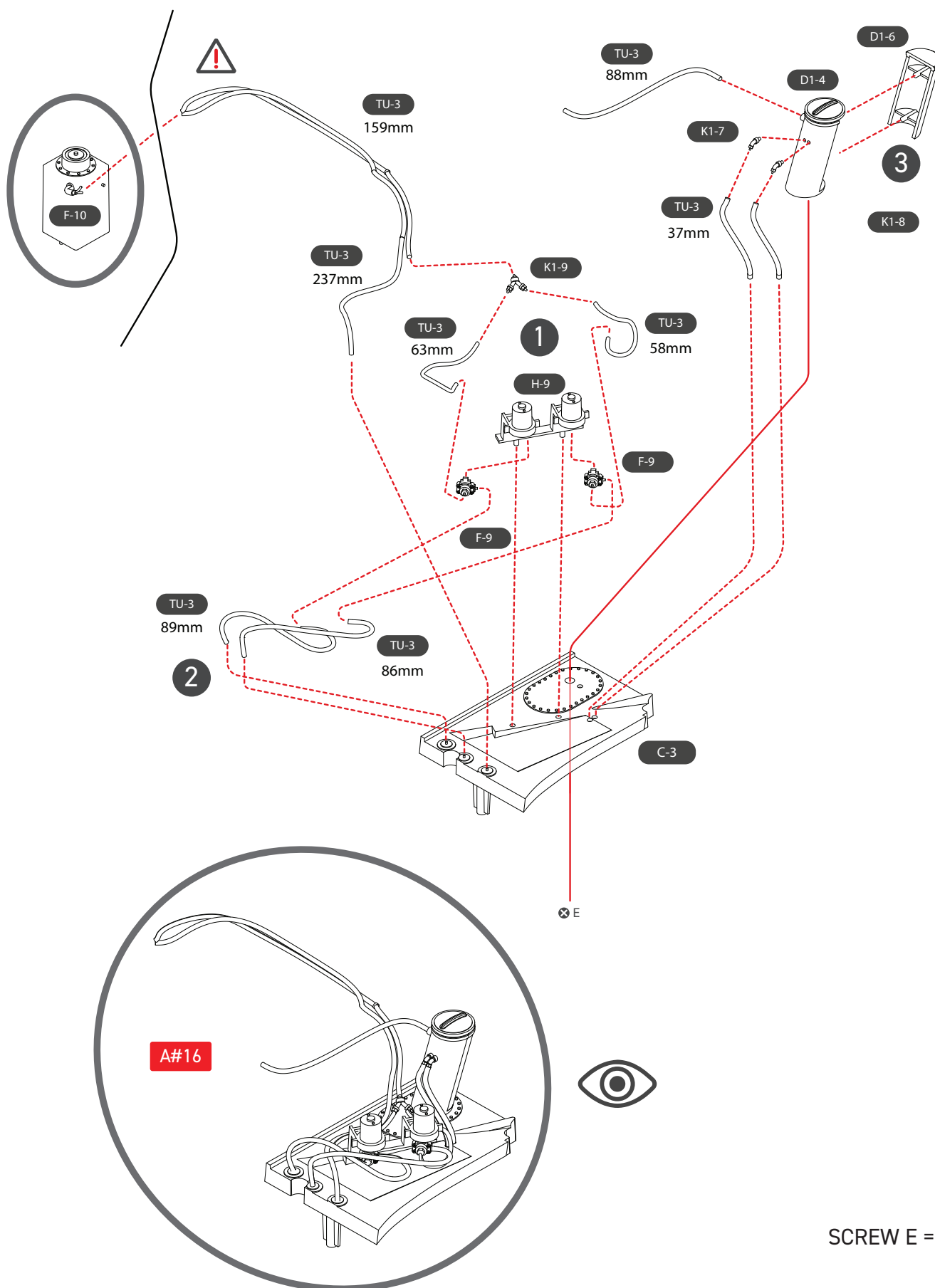
15



SCREW F = 4  
SCREW K = 1

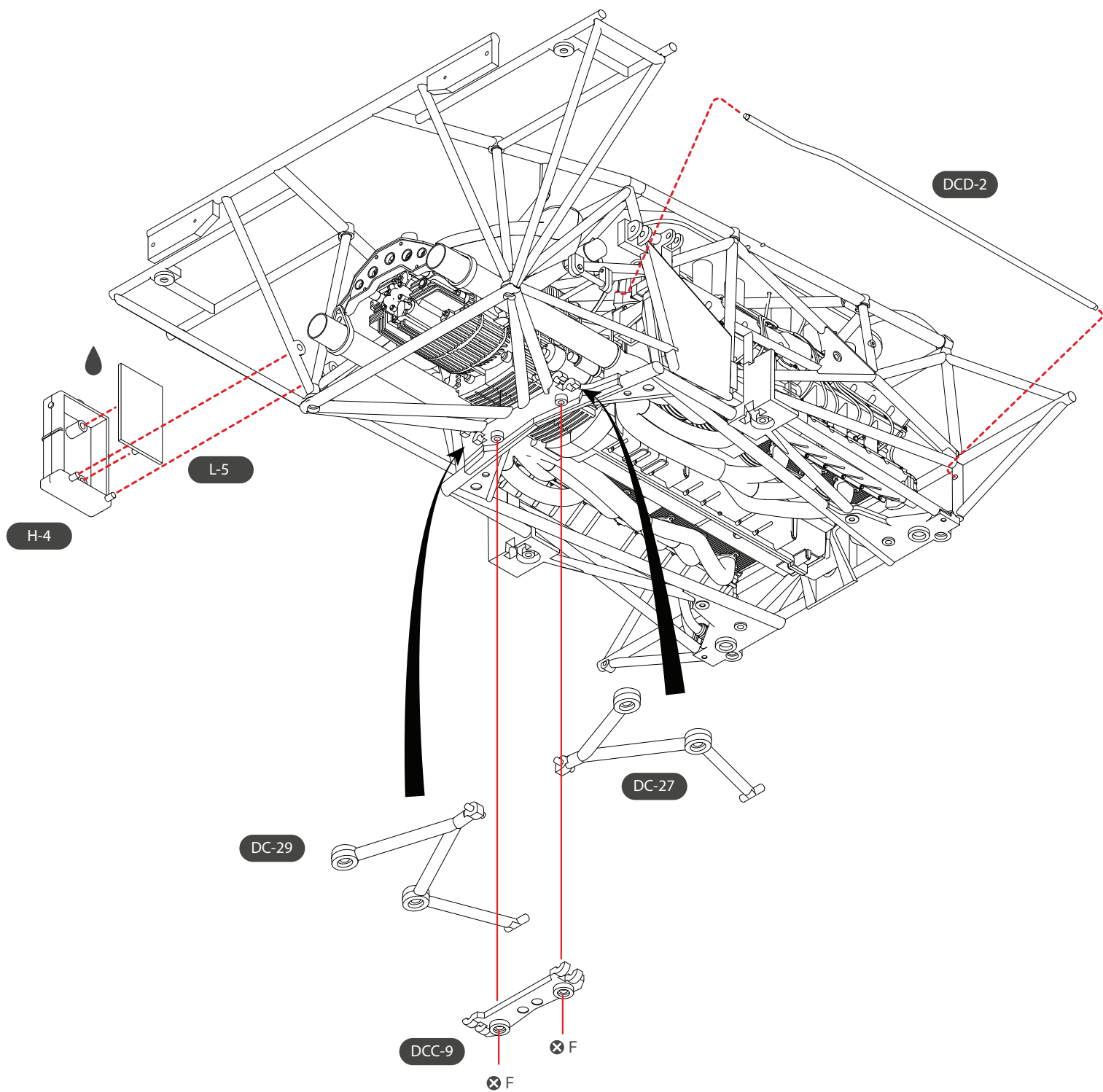
16



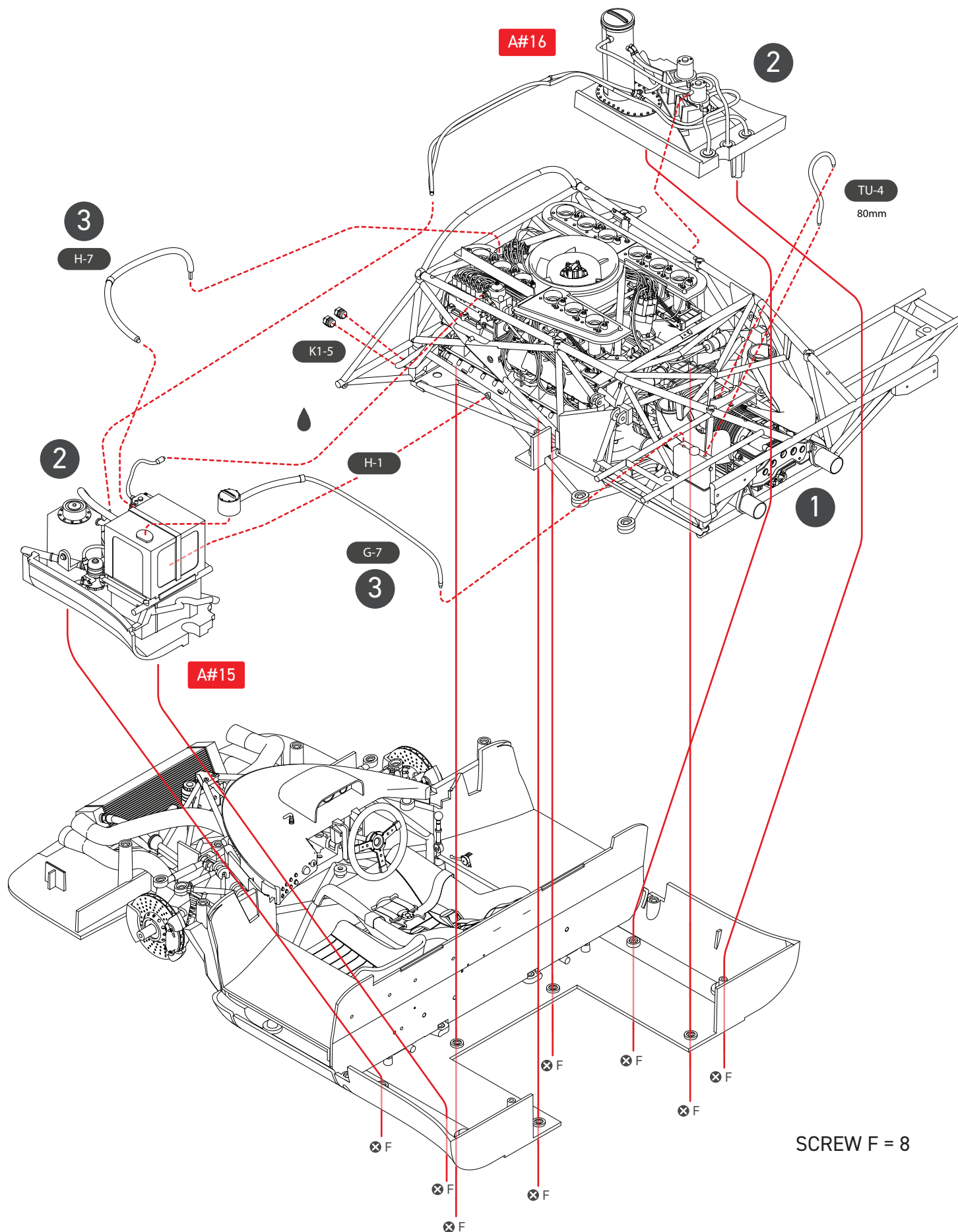


SCREW E = 1

18

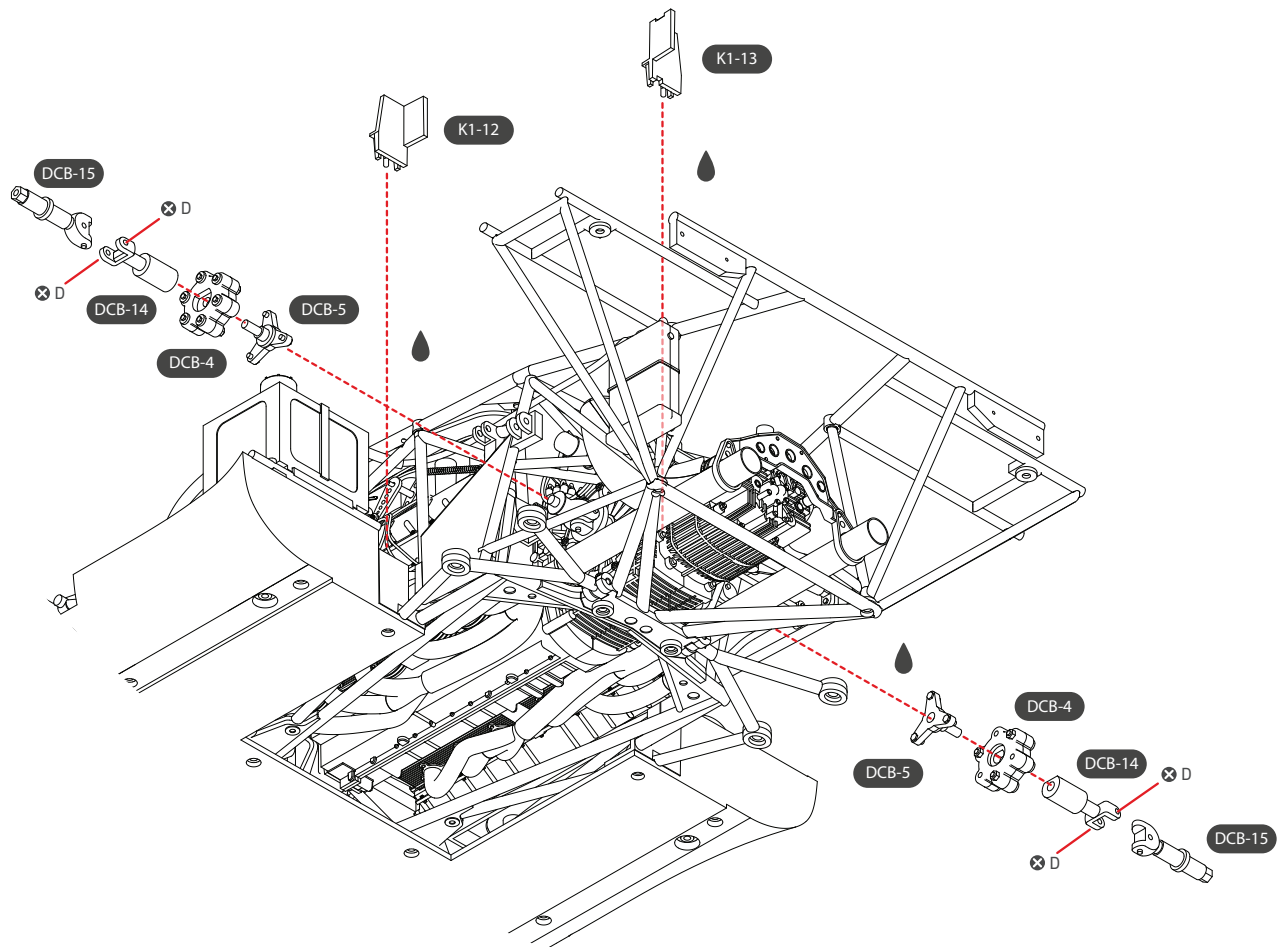


SCREW F = 2





20



The use of a magnesium frame came with considerable drawbacks, including its delicate nature and susceptibility to combustion. To ensure reliability, the frame was gas-pressurized, with a cpressure gauge enabling real-time monitoring by drivers and engineers during races.

SCREW D = 4