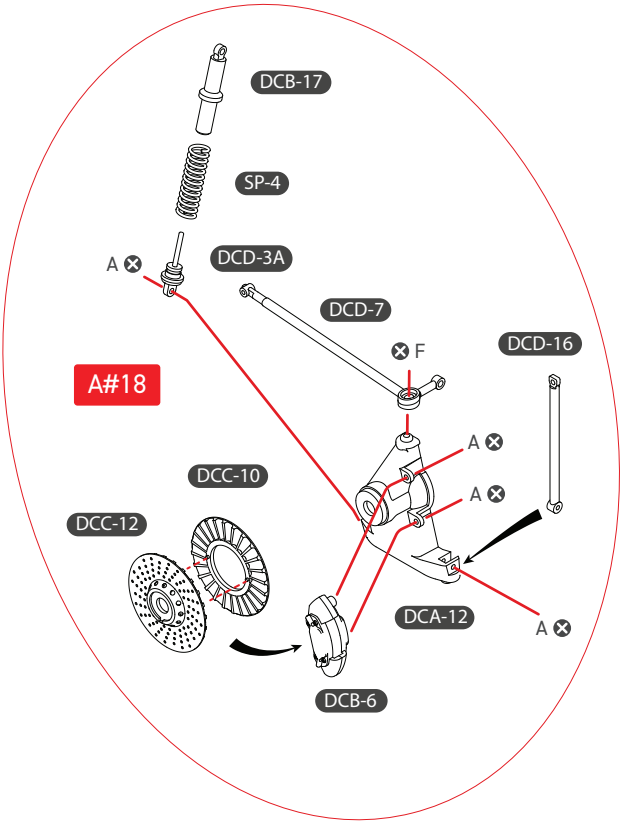
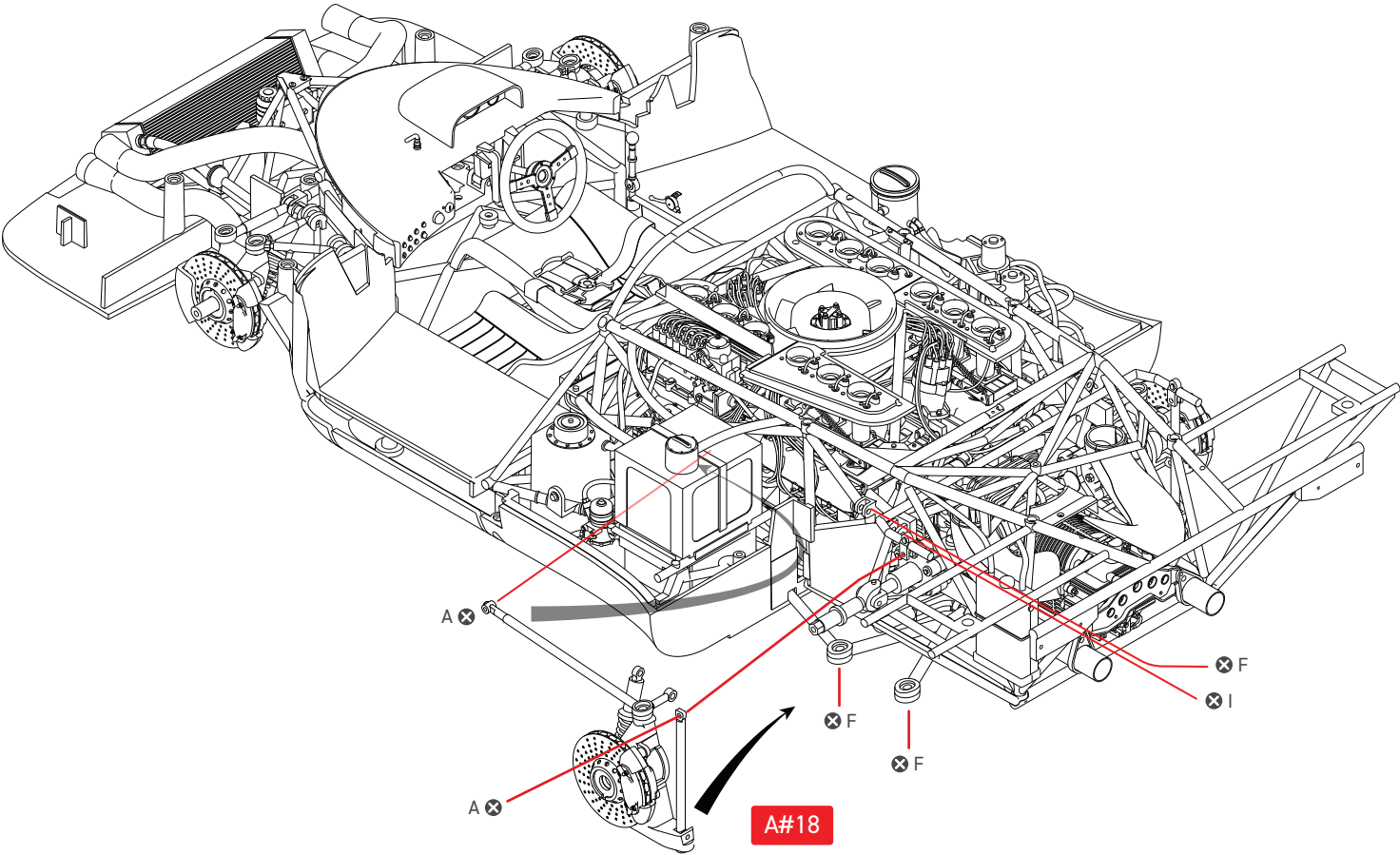


SCREW A = 6
SCREW F = 4
SCREW I = 1

22

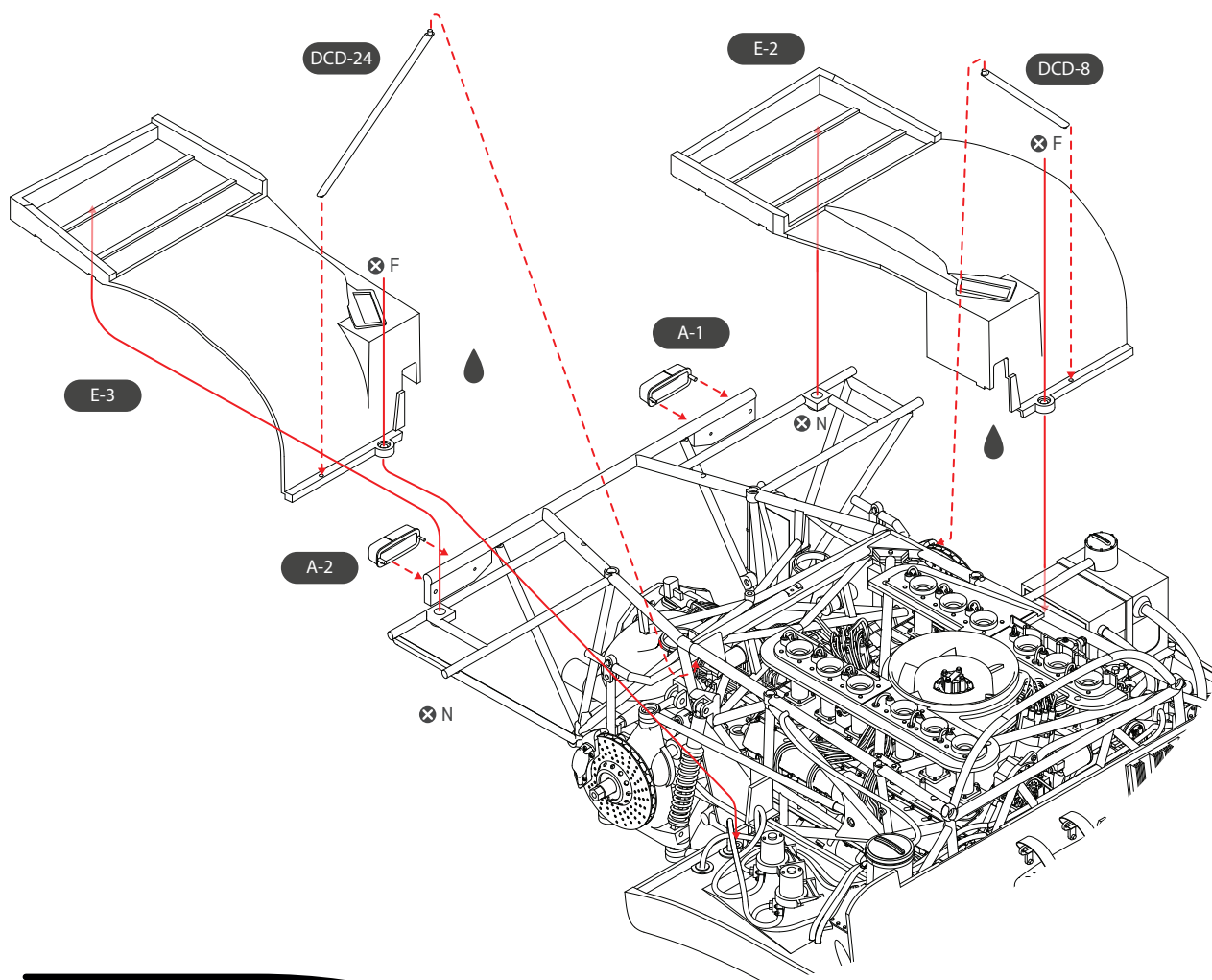


SCREW A = 6
SCREW F = 4
SCREW I = 1

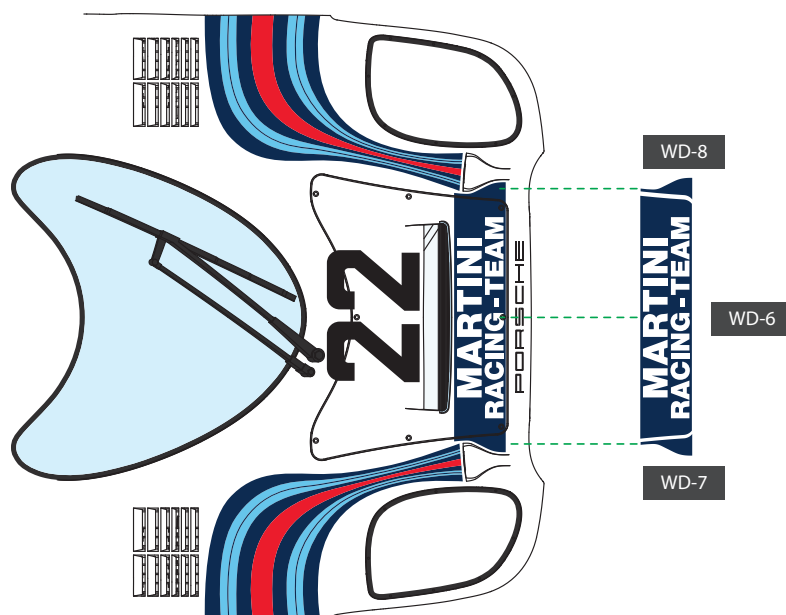


Pocher
Die-Cast Model Kits

23

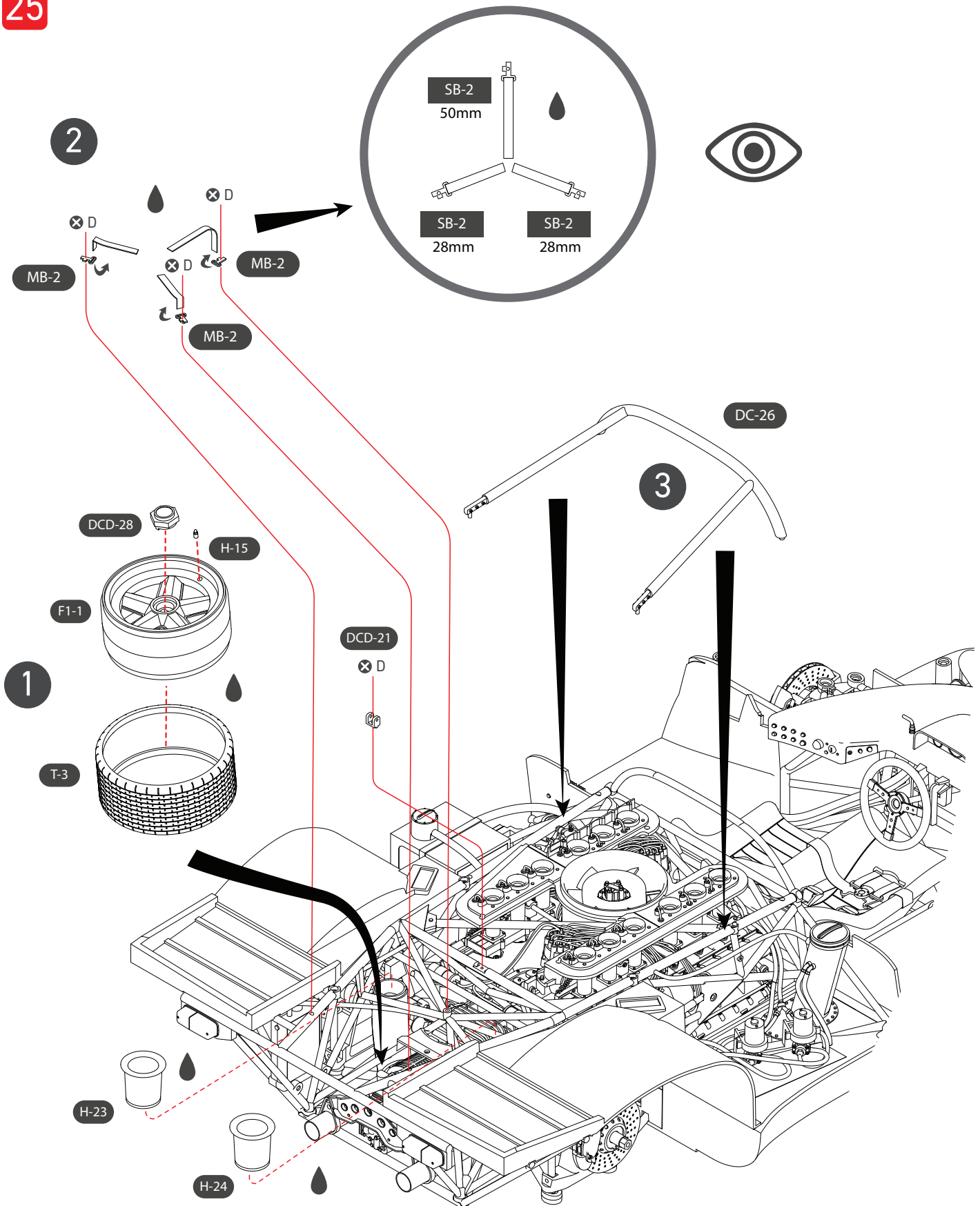


24

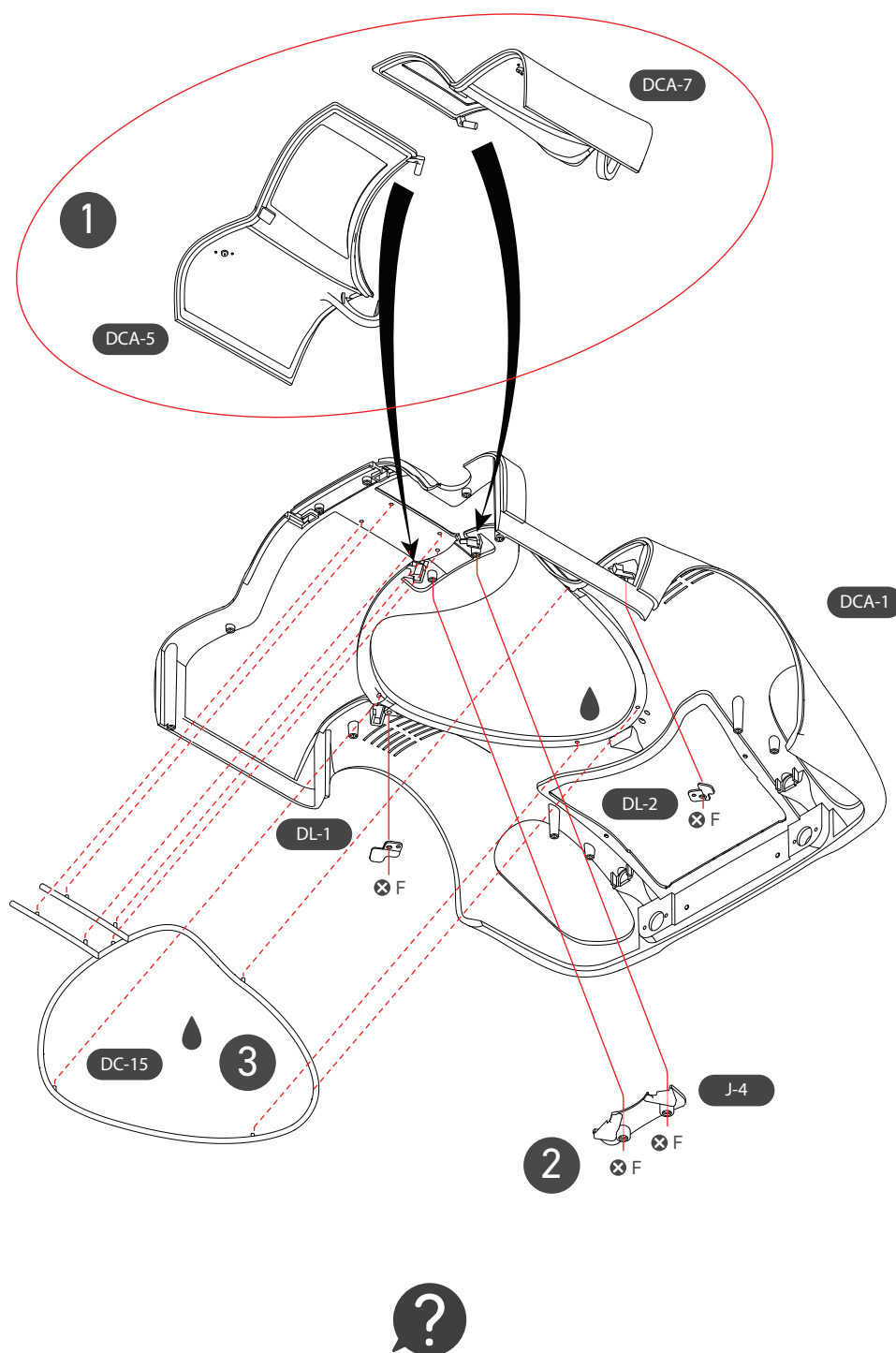


SCREW F = 2
SCREW N = 2

25



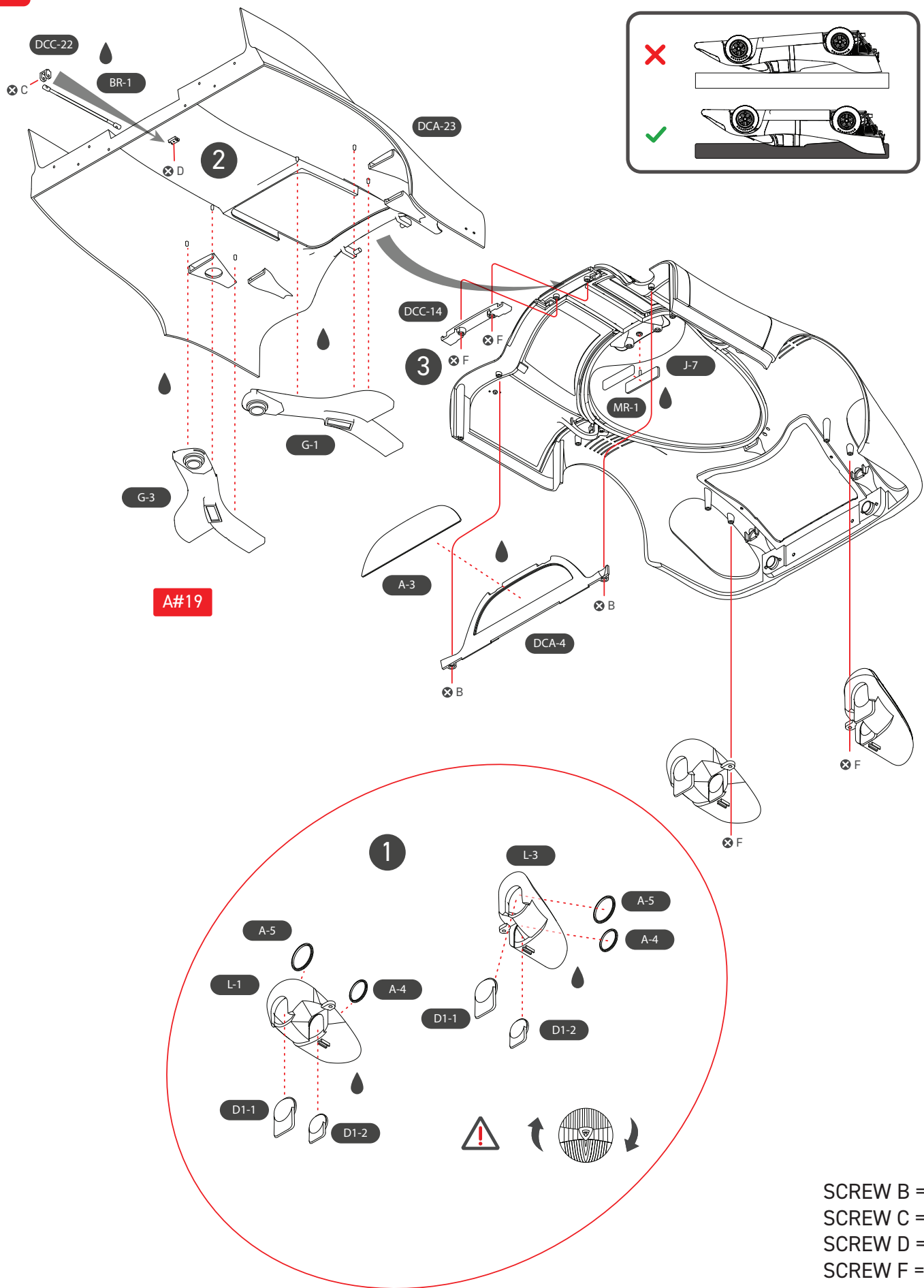
SCREW D = 4



The Porsche 917 in an effort to save weight had no mechanism to keep the doors open, and were often held open by a rope tied to the air vent above the wheel arch or even propped up by something such as a simple piece of wood.

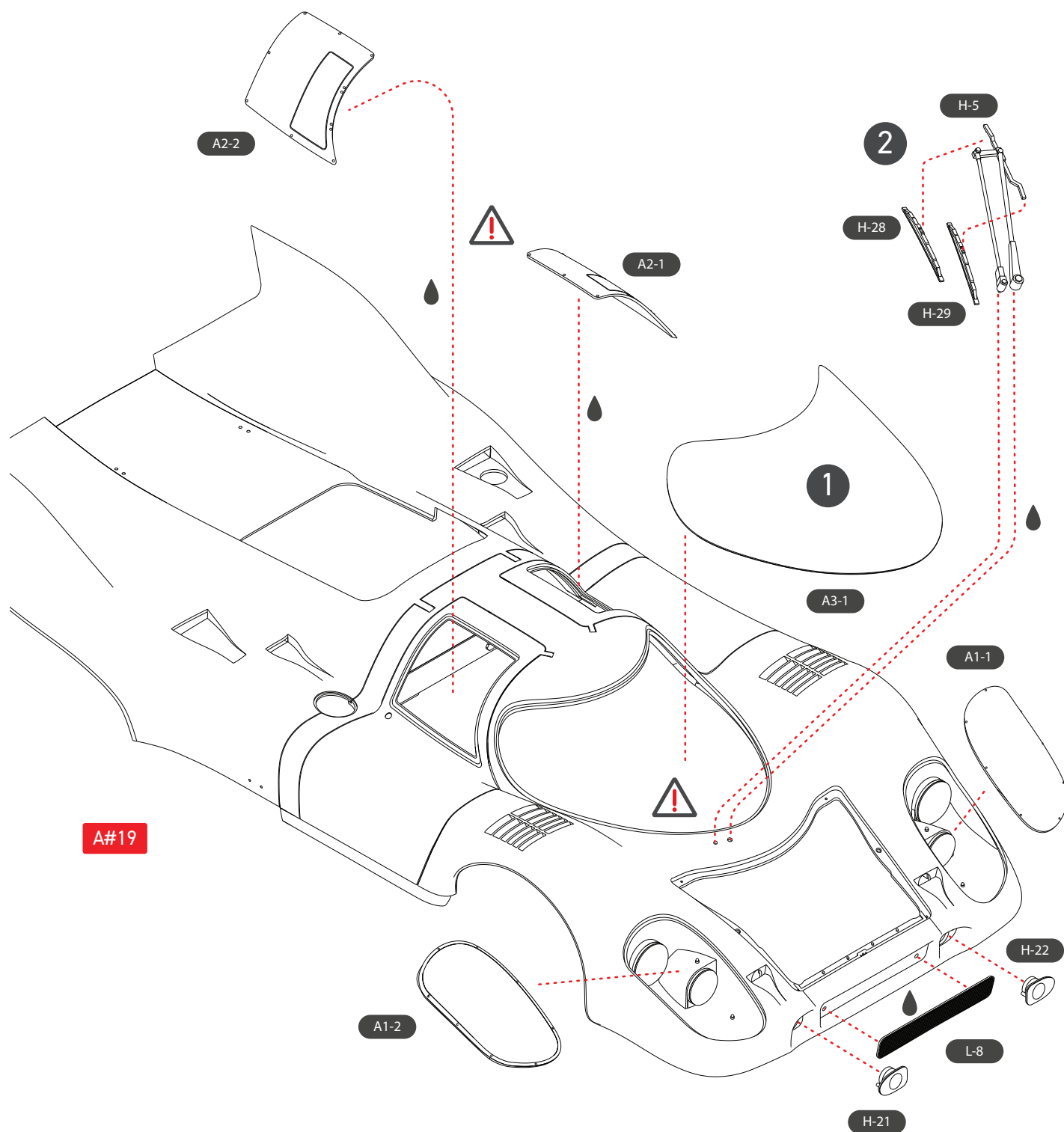
SCREW F = 4

27



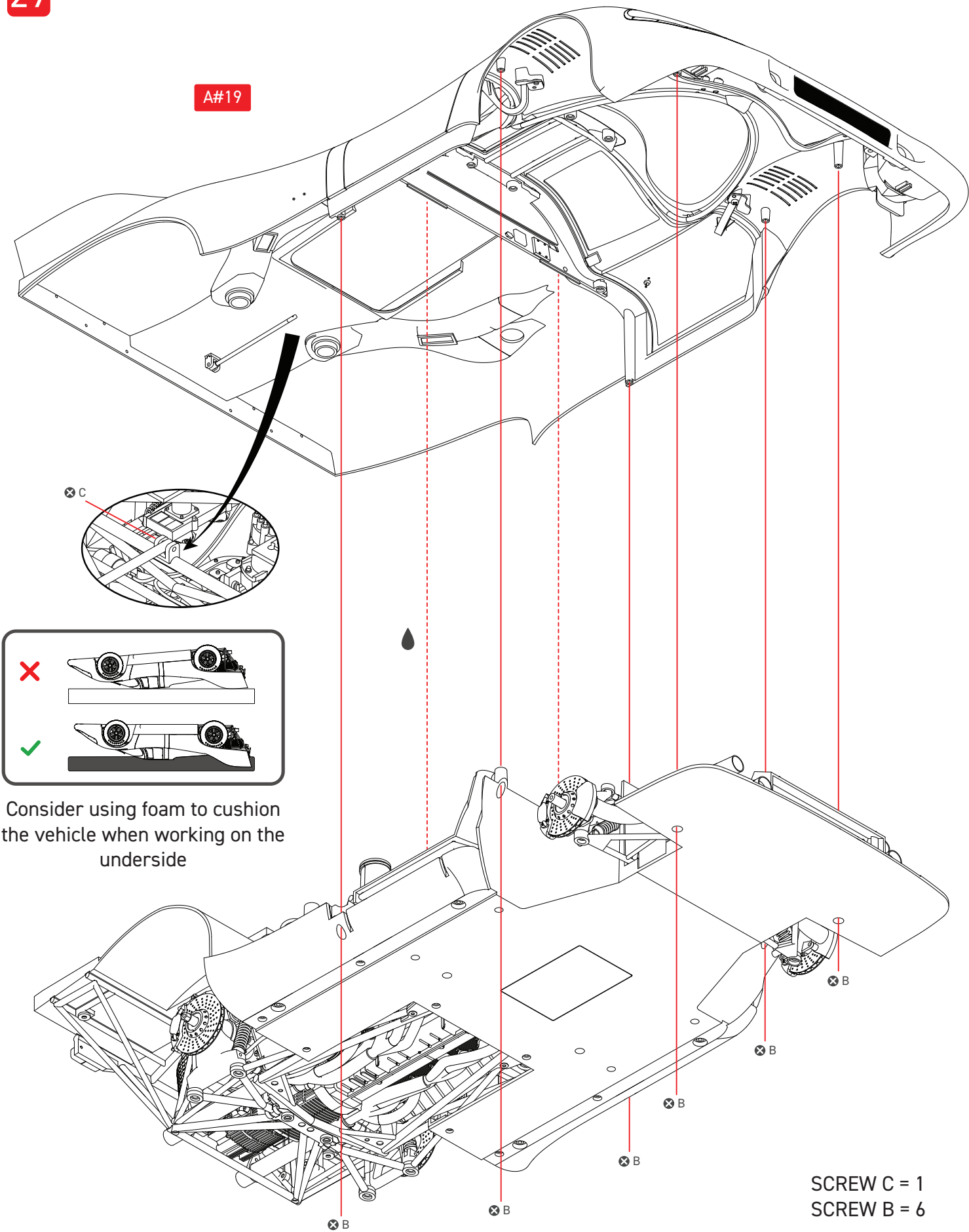


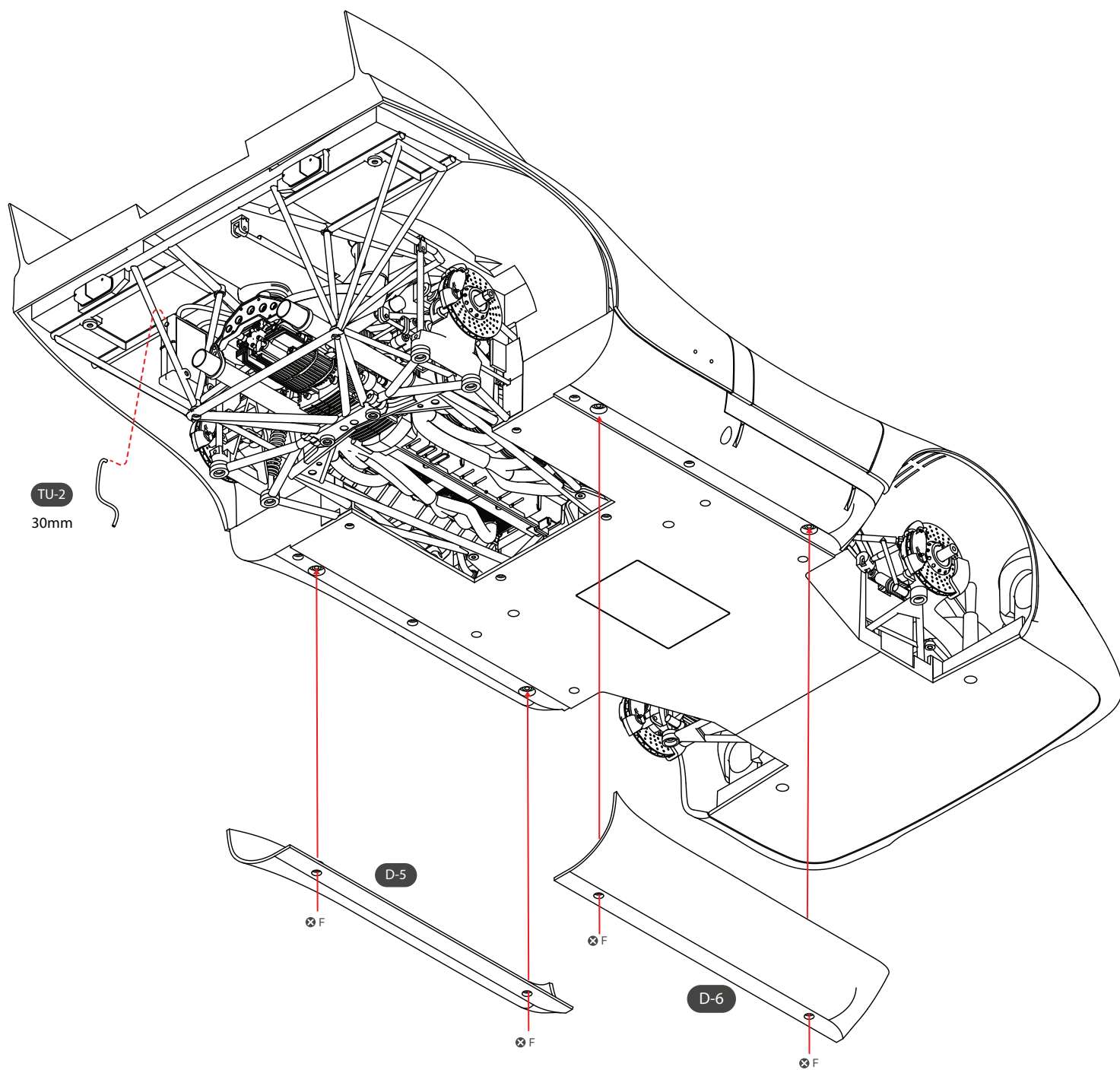
Use a clear drying glue on clear plastic parts to avoid fogging



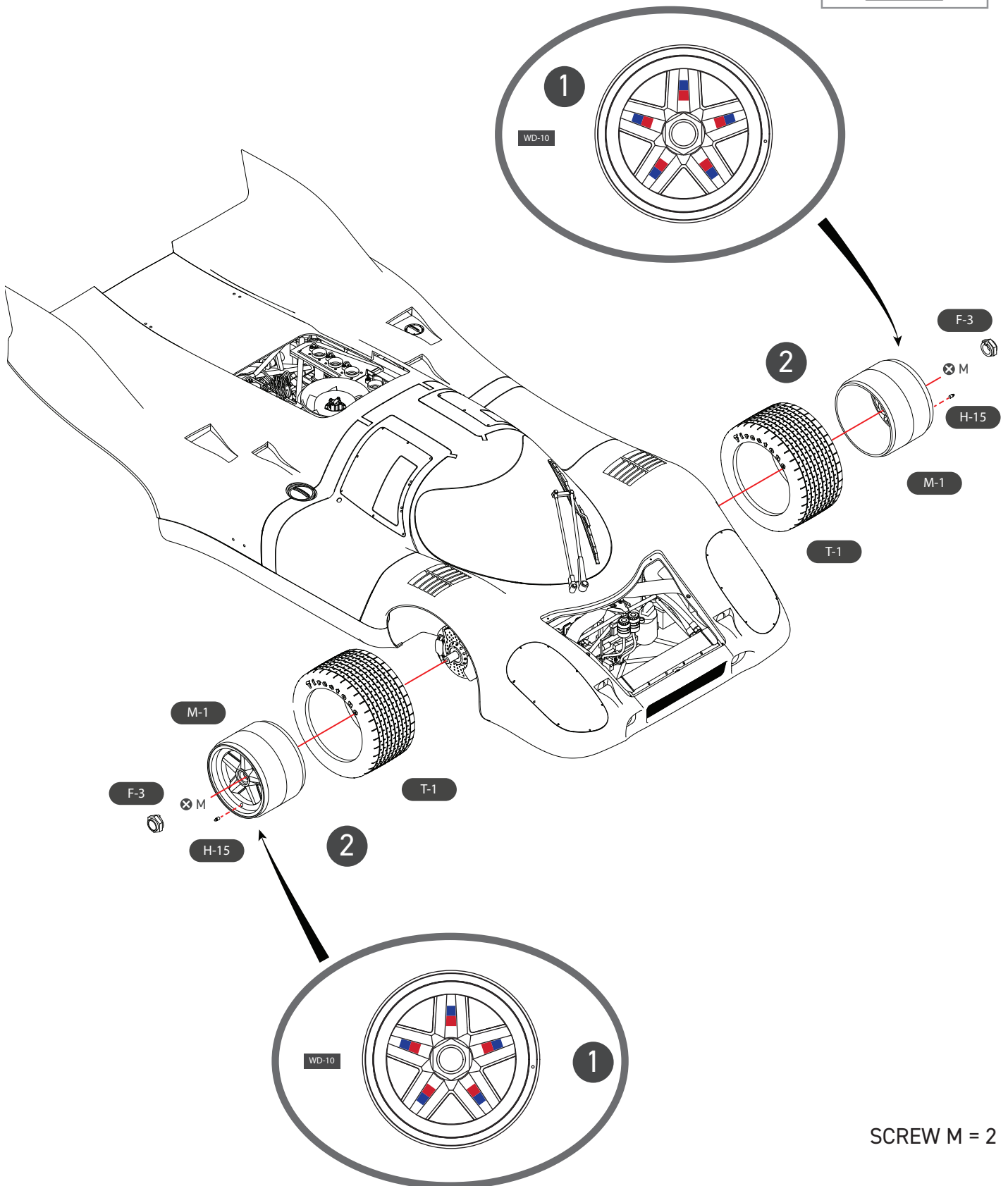
29

A#19

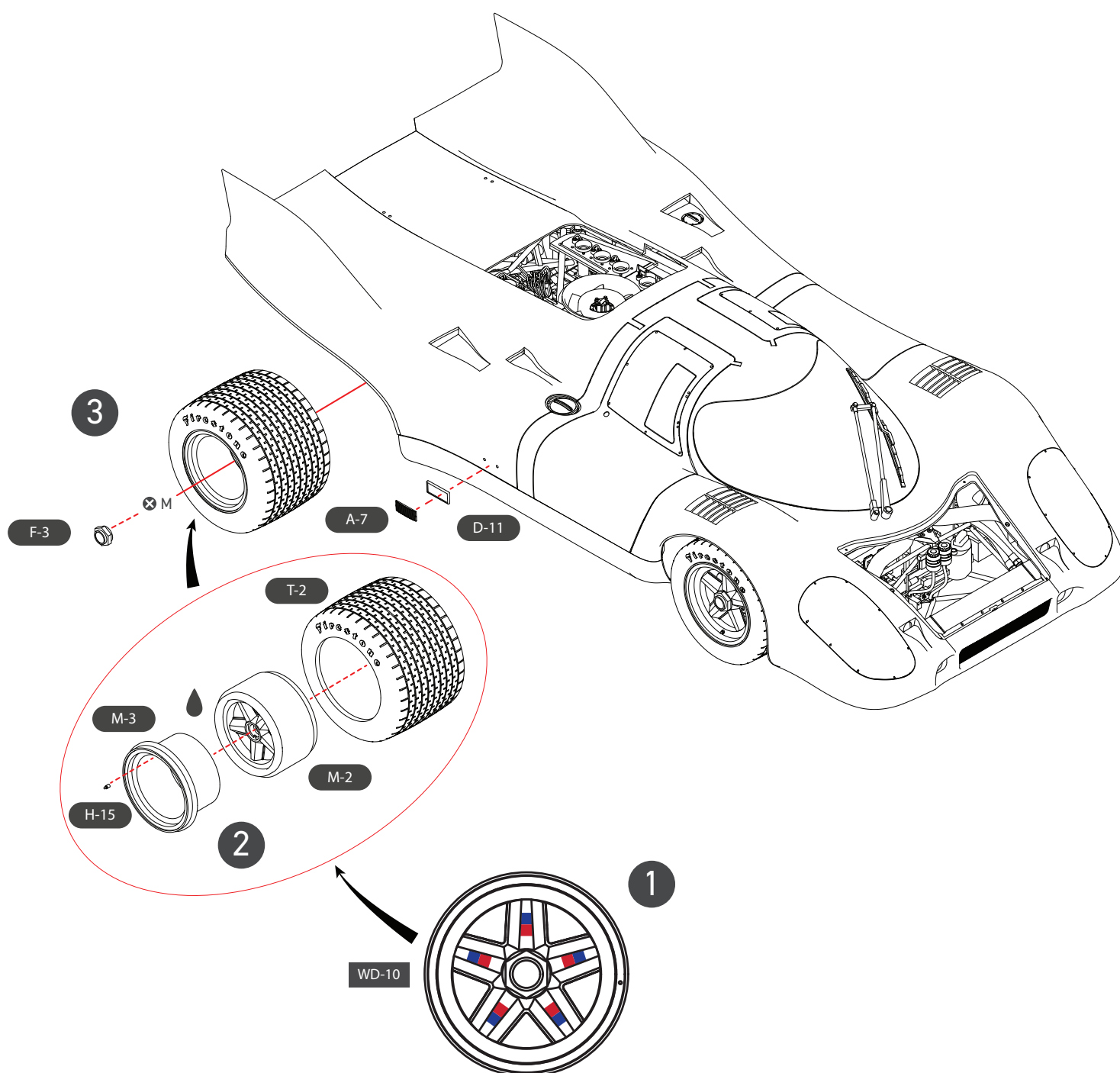
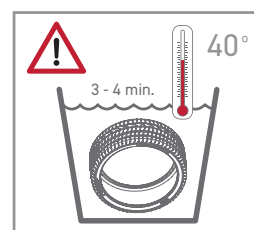




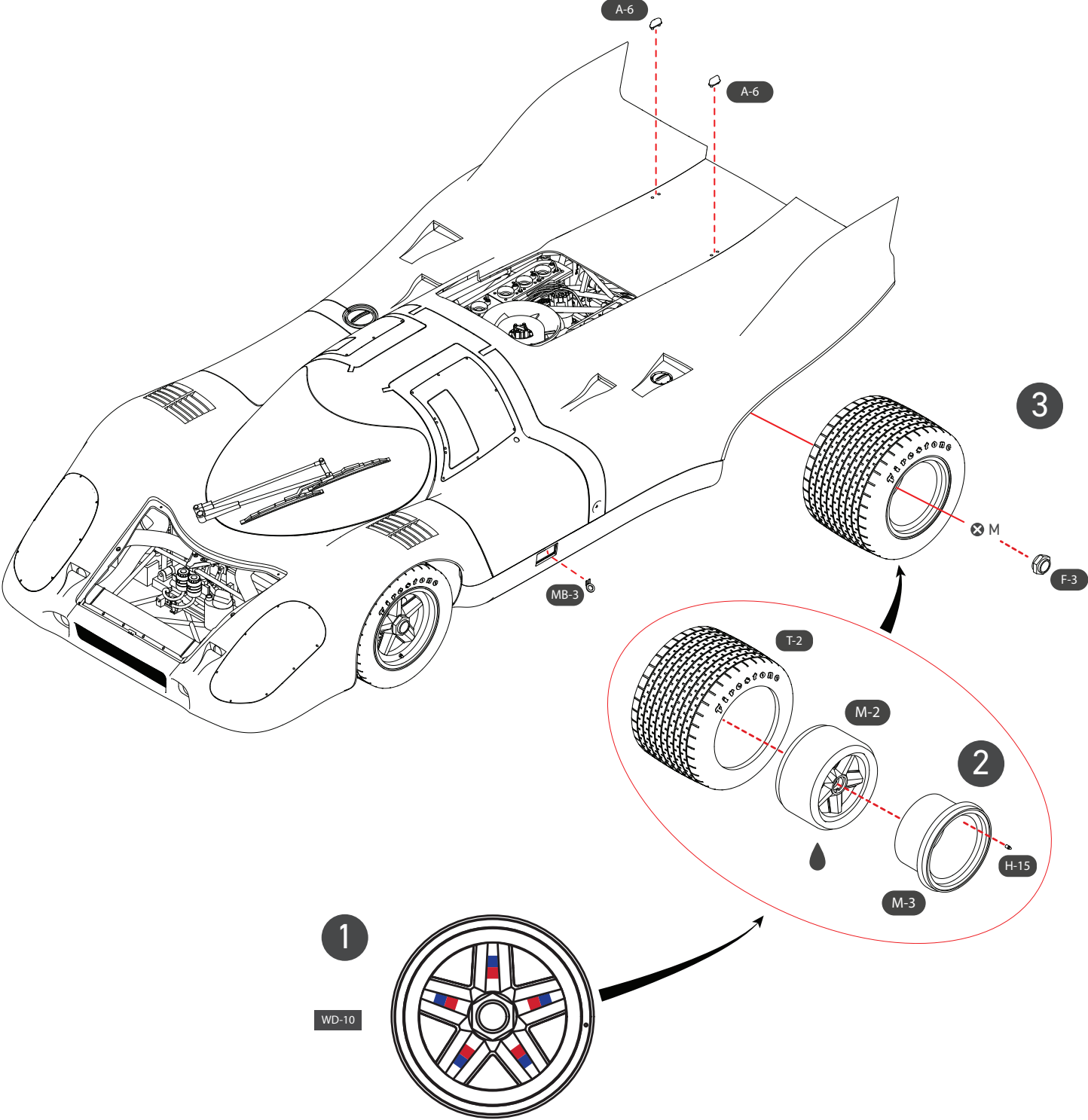
SCREW F = 4



SCREW M = 2



SCREW M = 1



SCREW M = 1